



**FEATURED PROJECT**

# Costco Meat Plant Nears Completion



*The Costco Meat Plant in Morris, Illinois is very close to completion and already producing hot dogs. This 281,000 square foot production facility will greatly improve deliveries to the Midwest and East coast. (See story on page 3)*

## Vice President's Message



The first few months of the year have started quite slow for us. Due to the harsh winter, several projects have been pushed back. This caused delays in the schedule and some projects are going to require a faster pace in order to maintain our customer's original schedule. I am pleased to say that we have continued to add to our already extensive backlog which is going to create a very busy 2018 and 2019 for both Shorewood and Niles locations.

In other news, NECA has spoken in regards to the depletion in market share versus our non-union competition. It has been over a decade since they have been able to gain any type of Inside work market share. NECA president, David Long, along with many other members are devising a plan and setting a goal to attempt to bring up market share by 10 percent by 2025. They are calling it their "10-25 program". In order to help achieve this goal as a contractor, we must continue to innovate, improve our efficiencies, find ways to make things better, and to ultimately achieve our goal in Customer Delight. I want to challenge everyone in our organization to not stay quiet on the issues and challenges we face everyday. Be an advocate for change and together we can help achieve this goal.

*(Continued on page 2)*



## Vice President's Message

*(Continued from page 1)*

As you'll read in our featured news article for the quarter, we are putting the finishing touches on the Costco Meatpacking facility. I'd like to personally thank everyone who put their hard work and dedication towards this project. It has been a tremendous success in every sense of the word. Not only was the general contractor, Whiting-Turner, extremely pleased with our work, but we have gone above and beyond for the owner and are now working directly for Costco with various task orders. This project doesn't just represent what we can build, but the cultural values that we stand for as a top tier contractor and what we bring to every project we step foot on. Block Electric has earned the trust and respect from yet another customer, and if we continue to stay true to our core values, they will be a customer for life.

Thank you all for bearing through this winter. I am excited for what's coming up this spring.  
— **SCOTT BLOCK**

## Spotlight On: Brian Lacke FOREMAN

Foreman Brian Lacke, who began working for Block Electric in 2010, has been working on the Costco Meat Plant in Morris, Illinois since July of 2016. Prior to the Costco Meat Plant project, Brian worked on the Akzo Chemical project for four years.

Brian lives in Ottawa, Illinois with his wife Rachel and their three children—Owen, 5; Emma, 3; and Jace, who will be two this month. The couple has been married since 2011.

Brian is currently remodeling his basement by adding a bar and a living room area. He's using old barn wood and tin from a barn he is currently tearing down.

In addition to his busy home life, Brian's hobbies include playing softball for the Local 176 Softball Team, which he has coached for about three years.



Brian is committed to helping others and often donates his time by volunteering for different organizations such as the United Way and Make a Wish Foundation. He also is a volunteer firefighter/EMT for his hometown of Grand Ridge.

## Announcements

### Welcome Block Electric's New Journeymen

■ Congratulations to Kristen Wilk, who became a Journeyman on January 25, 2018.

■ Congratulations to John Merlak, who became a Journeyman on March 13, 2018.

### Block Electric New Projects

- NW Mudd Hall 3rd Floor
- Argonne National Labs Abri Credit Union
- APMC ACL Lab Analyzers
- Ambassador Hotel LED Lights
- Deer Park Space
- Silver Oaks Behavioral Health - New Lenox
- Lincoln Hall Middle School - Phase 3
- Union Station - Great Hall Lighting & Elevator Upgrade

## FEATURED PROJECT

# Costco Meat Plant Nears Completion



*(Continued from page 1)*

The Costco Meat Plant in Morris, Illinois is very close to completion and already producing hot dogs.

The 281,000 square foot production facility will produce hot dogs, meatballs, hamburger patties and ground hamburger. The only other Costco Meat Plant is in Tracy, California, so the location of this plant will greatly improve deliveries to the Midwest and East coast.

This was a very high profile and complicated project, with all of the PVC coated rigid and stainless steel conduit for a clean, food grade installation. Eric Harris of Whiting-Turner was the construction manager for this project.

Block Electric's team was lead by project managers Doug Henline and Scott Schultz, as well as general foreman Chris McCormick and David Senko. In October of 2017, this project peaked out with 72 Block Electric electricians.

We are very proud of all the hard work and dedication that was put into this project. Costco management, including the Vice President, has expressed how much they are impressed with our craftsmanship while visiting the site to check on the project's progress.

Thank you to all Block Electric team members for your hard work and customer delight!

## NEW IDEAS NEEDED... WIN A VISA GIFT CARD! New Products, Tools and Prefab Assemblies

### WE NEED YOUR HELP!

We are looking for fresh and innovative ideas for new products, tools and ongoing prefab assemblies to feature in future issues of the Block Electric newsletter.

In an effort to make our jobs run more efficiently and be more cost-effective, we are looking for your suggestions regarding which tools can be used in your day-to-day work to make your lives easier.

There are no right or wrong answers. We're looking for any and all products and ideas to share with the team.

### WHAT'S IN IT FOR YOU?

If your idea is featured in the Block Electric newsletter, you will receive up to a \$50.00 Visa gift card.

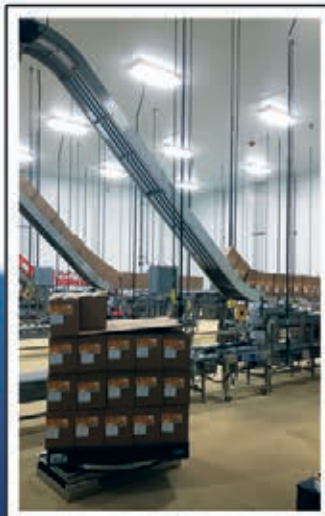
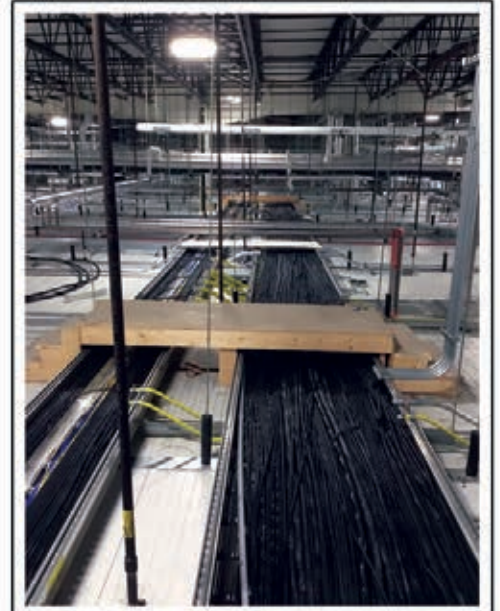
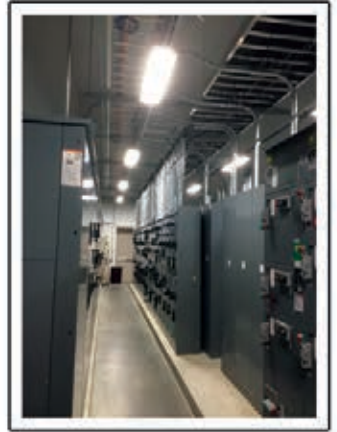
### Caddy Snap to Stud Telescoping Bracket with the Glider

Bracket  
Part Number:  
TSGB1624S  
Glider Part  
Number:  
TSGLDR1



To help improve our efficiency in the field, we want everyone to use our featured product on your next project. This product allows for all your 1900 or 11B boxes to be pre-fabricated with brackets and still allows for field adjustments to be made with no additional tools needed.

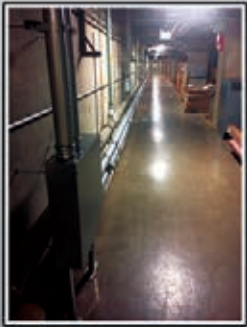
# FEATURED PROJECT Costco Meat Plant





# Customer Delight

## Argonne Dryroom



"I just wanted to point out some of the nice work your guys are doing on our project. Adam (Mellen) is doing a great job managing the quality."

*Lee Bryan  
Lindblad Construction  
Argonne Dryroom Project*

## Overdue Congratulations on Completion of Shakespeare Theatre

"Although somewhat overdue, I want to congratulate you on the completion of Shakespeare Theatre/The Yard at Navy Pier, and commend the Block Electric team that worked on the project: foreman Gerald Martin, the team in the field, yourself, and any others involved. This was a challenging project with obstacles for all parties. In spite of these obstacles, Block Electric provided valuable guidance and was essential to the success of the project. I will certainly be recommending Block Electric for future projects when I have the opportunity."

*Rob Lahue  
Associate Electrical Engineer  
Environmental Systems Design, Inc.*

## FOCUS ON SAFETY:

# Create Good Habits to Help Reduce Workplace Stress

*by United Services Group*

Everyone who has ever held a job has, at some point, felt the pressure of work related stress.

Any job can have stressful elements, even if you love what you do. In the short term, you may experience pressure to meet a deadline or to fulfill a challenging obligation. But when work stress becomes chronic, it can be overwhelming and harmful to both physical and emotional health.

Job stress is the physical and emotional harm that occurs when the requirements of a job do not match the capabilities, resources or needs of the worker. Job stress can lead to poor health and even injury.

### Safe Work Practices and Tips:

- Tell your supervisor how you feel.
- Reduce job stress by taking care of yourself.
- Engage in regular exercise. It is a powerful stress reliever.

- Take time to recharge. Avoid the negative effects of chronic stress and burnout. Take time to "switch off" by not engaging in work-related activities.

- Realize that your job may not be the best option for your personality or with your other responsibilities (such as children, school and/or medical conditions).

- Establish work-life boundaries. Creating clear boundaries between work and your personal life helps reduce the potential for work-life conflict and the stress that goes along with it.

- Make sure you seek medical attention if you begin to experience the following conditions:

- Frequent headaches
- Inability to sleep
- Difficulty concentrating
- Upset stomach
- Short temper

## Block Electric's Safety Policy

It is our policy to provide all employees with a safe, healthful, and hazard-free work place. The intent at all times is to comply with the provisions of the Williams-Steiger Occupational Safety and Health Act of 1970 (OSHA).

Block Electric recognizes that accident prevention and efficient production are interrelated. We further recognize our responsibility to provide adequate training, safeguards and safety equipment for each employee. In turn each employee bears the responsibility to comply with all safety regulations and the use of required safety equipment. The safety and well being of our employees has been and will continue to be of primary importance.

Our EMR is .78 and our Contractor Score is 2390. Phil Casto is our safety director.

## Block Electric Scholarship Application Deadline: April 30

The application deadline for the annual Block Electric Scholarship is Monday, April 30, 2018. Application instructions are listed below and are in your Team Member Handbook. Submit all applications to: Ms. Pauline Staab, Porte Brown Accounting and Consulting, 1752 Capital Street, Suite 400, Elgin, Illinois 60124

## Scholarship Eligibility/ Application Instructions

Block Electric is committed to the success and achievements of the people who make up our company. We are also interested in promoting the achievements of the next generation of individuals. In order to help accomplish this, we offer a partial scholarship program to our people for their children who are interested in attending college. The funding is made through Block Electric Co.

### Eligibility

The following persons are eligible to apply for a scholarship:

1. Children of a Block Electric Co. employee. The employee must be employed by Block Electric for at least five (5) years prior to application.
2. The applicant must have maintained a grade point average of at least 2.5 on a 4.0 scale during the last two (2) years of high school, or if presently attending college, a 2.5 average in the last complete year.
3. Applicants must be seeking enrollment or enrolled in a four year accredited college or university.
4. Prior recipients can also be eligible. They must re apply annually, and must have maintained a 2.5 grade point average while attending college.
5. Children of the officers of Block Electric Co. are not eligible to participate.

### Scholarship Amounts

Individual scholarships of \$2,000.00 will be made available. A maximum of three (3) scholarships will be awarded each year.

### Selection Criteria

Selections of recipients will be based on the following:

1. Selections will be made by the independent accounting firm of Porte Brown,
2. In the event that more than three applications

are received in any year, eligible applicants who have not received a scholarship from Block Electric Co. in prior years will be given precedence.

3. At least two-thirds of the annual awards will be made to children of field personnel. Field personnel are defined as Apprentices, Electricians or Supervisors.

4. In the event that more than one application is received from the same family, the second family applicant will receive an award only if there are less than three other eligible applicants.

### Application Process

All applications must be in writing only and sent to: Ms. Pauline Staab, Porte Brown Accounting and Consulting 1752 Capital Street, Suite 400, Elgin, IL 60124

Any questions can be directed to Ryan Underwood at 847-647-4030.

The application is simply a letter written to Ms. Pauline Staab stating the following information:

1. Name, address, telephone number and the last 4 digits of the applicant's social security number.
  2. Name of parent of applicant.
  3. Name and address of college or university to be attended.
  4. The applicant's high school and/or college (in the event of re application) should be instructed to send the applicant's transcripts to Ms. Staab at the above address.
  5. A summary of why the applicant is in need of this scholarship.
- The deadline for the application, along with the other information, is April 30. The selection and notification will be made by May 31.

### Other

Block Electric Co. reserves the right to change the eligibility, scholarship amount, and selection criteria at any time.

## REGISTER NOW! Walk & Roll Chicago

**Saturday, April 21**

*Soldier Field, Stadium Green*



Join us on Saturday, April 21, 2018 to celebrate the impact Walk & Roll Chicago has made in our community over the last 46 years! There's still time to join Team Block Electric for the annual American Cancer Society Walk and Roll.

To sign up for CEI-Team Block Electric, go to: <http://main.acevents.org/goto/blockelectric> Click on either "Join a Team" or "Donate Now".

If you have questions, please feel free to contact Donna Dreksler or Crissy Sorensen at 847-647-4040 or [ddreksler@blockelectric.com](mailto:ddreksler@blockelectric.com) or [csorensen@blockelectric.com](mailto:csorensen@blockelectric.com).

### **One Day. One Goal. Four Ways to Roll.**

Walk & Roll Chicago is the longest-running cancer fundraiser in Illinois. For the past 46 years, people from all over Chicagoland have gathered for Walk & Roll to support the American Cancer Society. This one-of-a-kind event offers participants of all skill levels the opportunity to walk or run 5K, skate 10K or bike 15k to raise funds and help save lives from all cancers. We invite you to join us at Soldier Field on April 21, 2018 to honor cancer survivors, and caregivers, and to enjoy family-friendly activities!

The American Cancer Society is the largest voluntary health organization in the world. On behalf of Block Electric, thank you for your support of the American Cancer Society.

**Block Electric Company**  
7107 Milwaukee Avenue  
Niles, Illinois 60714



Block Electric Company is an Equal Opportunity Employer

**CHECK OUT OUR WEBSITE!**

Visit [www.blockelectric.com](http://www.blockelectric.com)  
to see our website!

Please follow us on



**Niles:**  
7107 Milwaukee Avenue • Niles, IL 60714  
Phone: 847.647.4030 • Fax: 847.647.6980

**Block Electric Company**  
Service ■ Safety ■ Quality  
[www.blockelectric.com](http://www.blockelectric.com)

**Shorewood:**  
203-C Earl Road • Shorewood, IL 60404  
Phone: 815.744.2000 • Fax: 815.744.6070