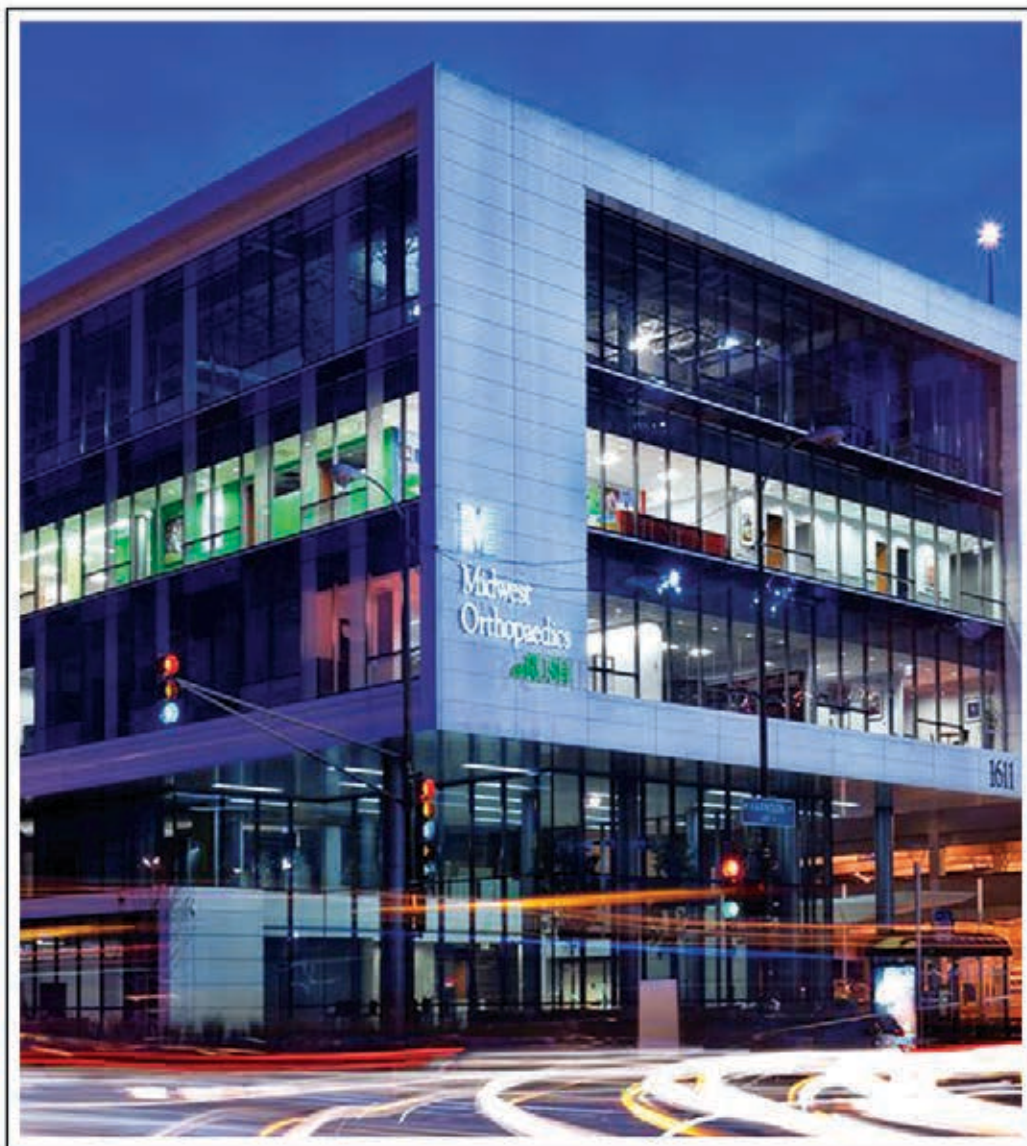




## 50 YEAR RELATIONSHIP

# Rush University Medical Center



*Block Electric's long and prosperous history with Rush University Medical Center in Chicago includes a multitude of projects and spans over 50 years, dating all the way back to 1965.*

*(See story on page 4)*

## President's Message



We have worked our way through the first half of 2016 with mixed results. The first six months of 2016 have been

slower than normal for Block Electric, but our outlook for the next 18 months is very positive.

We have recently booked some very significant projects. Additions to our backlog include a meat plant for Costco in Morris, a renovation and addition to the Mudd Library at Northwestern University, an elementary school in Braidwood, a renovation of the Shakespeare Theatre at Navy Pier, a project at O'Hare Airport, multiple projects at Argonne Labs, and several projects at various health care institutions. Our backlog of work is currently the highest it has been in the last 18 months.

The Block Electric website was recently updated. Our goal was to give the website a fresh and more up-to-date look that works on mobile devices and tablets as well as it works on desktop computers. In addition, we wanted to showcase various individual projects to highlight our expertise and experience to perform in all types of industries. The website includes a timeline of Block Electric's long and proud history and descriptions of our technical capabilities.

I invite you to check out the website at [blockelectric.com](http://blockelectric.com).



*(Continued on page 2)*

# President's Message

*(Continued from page 1)*

The featured project in this issue is our ongoing work at Rush University Medical Center. Block Electric has a long history with Rush that began approximately 50 years ago. It is safe to say that most of our Local 134 electricians have worked at Rush at one time or another.

Customer Delight has been the key to our long relationship with Rush. Recent projects include the Midwest Orthopaedics Building and the Cohn Research Building on the Rush Campus.

In addition, we have a regular crew at Rush throughout the year performing regular maintenance and remodeling projects.

Finally, this issue includes the 2016-2017 Block Electric scholarship recipients. Each year I am pleased that we can continue to honor your sons and daughters as they prepare for their individual careers.

Enjoy the rest of the summer and continue to "Delight" our customers!

— JACK BLOCK

## Spotlight On: Mike Haines GENERAL FOREMAN

As Block Electric's resident General Foreman at Rush University Medical Center for 22 years, Mike Haines takes great pride in "maintaining the trust and confidence of the institution as long as I have."

Rush University is a state-of-the-art medical center located in the Illinois Medical District near Chicago's Loop. As a private, non-denominational university that is part of the nation's largest urban medical district, Rush University Medical Center is part of a hub of leading-edge patient care, research and education institutions.

Mike oversees all of Block Electric's projects at Rush University Medical Center and works closely with the foremen on individual projects. He also attends all meetings to ensure each project is on schedule and moving forward in a timely manner.

Being a valued employee and electrician at Rush University Medical Center, Mike's close relationship with the hospital executives is integral when bringing information to them regarding new projects, as well as investigating and exploring the existing conditions of projects that are currently in progress. This allows the hospital to design new areas



in-house with the confidence of knowing the electrical information is accurate and meets their needs. Rush University Medical Center's confidence in Mike's expertise is evident and is a direct reflection of the relationship he has worked hard to build during all his years of service at the hospital.

Prior to being hired by Block Electric in June of 1993, Mike attended Western Illinois University. He was given the opportunity to join the apprenticeship program through a family friend who happened to be the electrical inspector in his hometown of Niles.

When he's not busy overseeing Block Electric's day to day operations at Rush University Medical Center, Mike enjoys backyard barbecues, fishing, golfing, gardening and watching the Cubs win.

Mike lives in Mundelein with his wife Sharon, and is the father of Joseph, 27, and Jessie, 24.

## Celebrating 25 years: Block Family Foundation benefits charities

For over 25 years Block Electric has supported various charitable organizations through contributions from the Block Family Foundation. Since its inception in 1991, the Block Family Foundation has donated nearly \$2.5 million to a multitude of charitable organizations.

## LARRY McCORMICK: 20 Years of Service



Congratulations to Larry McCormick for his years of loyalty, service and dedication to Block Electric.

Larry joined Block on July 11, 1996 and recently celebrated his 20 year anniversary.



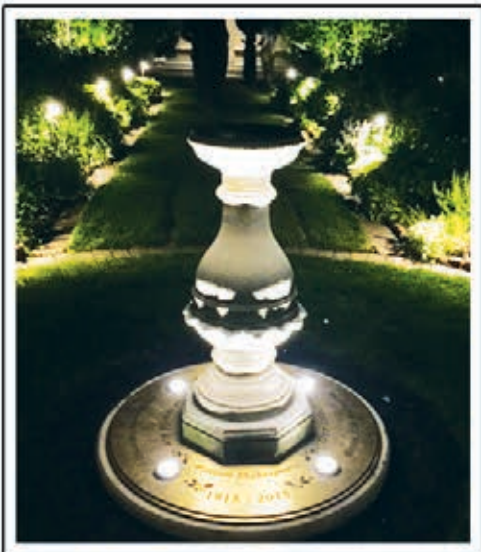
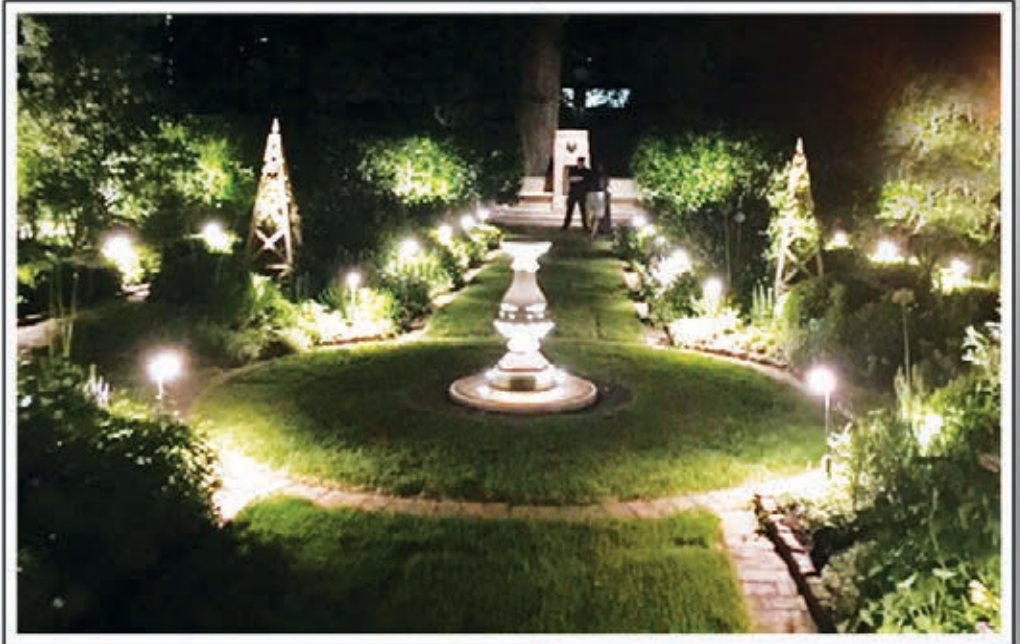
# LIGHTING UP THE NIGHT: Midsummer Lights at Shakespeare Garden

Block Electric was integral in the recent makeover of the historic Shakespeare Garden on Northwestern University's campus.

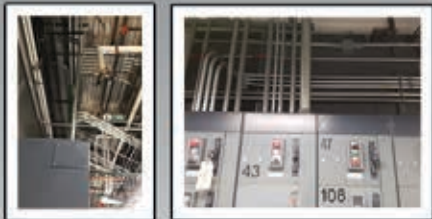
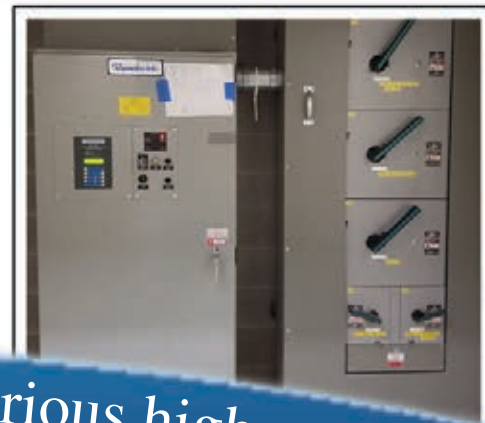
Shakespeare Garden was inspired by Shakespeare's *Midsummer Night's Dream* and contains plants that are mentioned in the writings of William Shakespeare. After sundown, the garden is invisible without lighting.

Between March and June of this year, Block Electric's Frank Raucci and Brendan Christy worked closely with Northwestern University's Landscape Architect Ann Ziegelmaier to install new landscape, pathway and bench lighting throughout the garden.

Dozens of small LED lightbulbs were strategically placed throughout the historic garden to simulate the action of fireflies and fairies in *Midsummer Night's Dream*. The fountain at the east end of the garden is lit by a pencil-thin fixture to represent moonlight, and the stone benches are illuminated from underneath.





**ATRIUM/HVAC UPGRADE****PROFESSIONAL BUILDING GENERATOR****50 YEAR RELATIONSHIP****Rush University Medical Center**

Since 1965 Block Electric has had a long and prosperous history with Rush University Medical Center in Chicago. Our electricians are involved in a wide variety of projects at the hospital. Block Electric has completed the following projects at Rush within the past year:

- The 500 Club Lighting Project. Rush uses the 500 Club for in-house functions and events.

- Demolition of the east portion of campus.

- Updated the HVAC and electrical portions of the 13 Jelke building, along with AMS Mechanical.

In addition to the recently completed projects, Block is in the middle of the 7th and 9th patient bed floor remodels. The 7 South floor was

finished several months ago. The 9 North project will begin within the next few months.

One little known fact is that Block electricians regularly assist in behind the scenes lighting and HVAC work for various TV shows that are filmed at Rush. Most recently Block worked on Chicago Med. In the past Block has worked on Boss and Shameless.

Mike Haines oversees all of Block Electric's projects at Rush University Medical Center and works closely with the foreman on individual projects. He also attends all meetings to ensure each project is on schedule and moving forward in a timely manner.

**KELLOGG SIMULATION LAB**

"Block Electric consistently performs various high quality work"



# Center

**13 JELKE HVAC UPGRADE**



**ATRIUM  
CENTRALIZED UPS**



**ATRIUM FIRE ALARM REPLACEMENT**



**CAMPUS MEDICAL AIR UPGRADE**



**JELKE ELEVATOR UPGRADE**



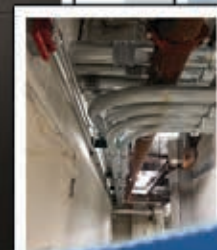
**KELLOGG NODE UPS**



**JRB ELEVATOR UPGRADE**



**KELLOGG FIRE ALARM UPGRADE**



work at Rush in a variety of different capacities.” —Mike Arvesen

## THIS IS HOW WE ROLL:

## Thank you for your support



Thank you all for another great Walk & Roll year! With your help, Block Electric

raised \$8,900 and the Chicago Electrical Industry raised \$200,000 for the American Cancer Society's 2016 Walk & Roll event. Together, we continue to save more lives from cancer.

Since 2011 Team Block has raised more than \$84,000 in donations for the American Cancer Society through our participation in the Walk & Roll event in Chicago every Spring.



## NEW JOURNEYMAN:

## Welcome David Galvez



Congratulations to our new Journeyman David Galvez. He became a Journeyman on March 15, 2016.

FOCUS ON SAFETY:  
Warning!  
Extreme heat  
safety tips

*By SeaBright Insurance Loss Control*

Wow! What a scorcher! You knew it was going to be a hot day but with this humidity it has to be 105° F outside. You reach for that power tool to finish your job and start to feel light-headed. It's probably because you haven't eaten much this morning. You can make it until lunch!

Time passes and your condition isn't better—in fact it's worse! Your breathing has increased, you're sweating profusely, and your mouth is dry. Something's wrong! You start to climb down the scaffolding but you're almost too weak to move. You feel like you're going to be sick. With no control over your movements, you fall to the ground below. The workers above you are trying to get your attention but you can't understand them. You yell, "Help me up guys!" but they don't respond. Can't they hear? All you can see is black...what's happening...?

Heat Exhaustion! That is what's happening. Heat exhaustion can occur when you are subjected to hot environments and fail to take in enough fluids, salts, or both. And even worse, this can lead to a life threatening condition known as a heat stroke. Sun stroke or heat stroke happens when the body's internal mechanism fails to regulate its core temperature. At this point, the body stops cooling itself through perspiration and can't get rid of excess heat. The end result can be death if the body temperature isn't lowered immediately! If you work in hot environments, it's critical to recognize when you're suffering from a Heat Stress Disorder.

Symptoms of Heat Stress Disorders

**Heat Cramps** - Symptoms are painful spasms of the muscles. Heat cramps are caused when workers consume large quantities of water but fail to take in enough salt to replace the salt their body lost through sweating. Tired muscles are most susceptible to cramping.

**Heat Exhaustion** - Symptoms for this disorder are moist, clammy, pale skin; profuse sweating; extreme weakness or fatigue; dry mouth; dizziness; fast pulse; rapid breathing; muscle cramps and nausea.

**Heat/Sun Stroke** - Symptoms are a very high body temperature (104° F or higher); lack of sweat; mental confusion, delirium, or hallucinations; deep breathing and rapid pulse; hot, dry, red or mottled skin; and dilated pupils. Get medical help at once for this.

Tips for Prevention

**Acclimatization** - Adjust yourself to the heat through short exposure periods followed by longer exposure until your body is accustomed to the heat. It may take 5-7 days of hot weather exposure before the body undergoes changes that make heat more bearable.

**Drink lots of Water/Liquids** - Replenish the fluid that your body is losing through sweating. Not only water, but critical electrolytes such as sodium, potassium and calcium are lost through sweating, so consider using electrolyte drinks to combat heat related disorders.

**Education** - Know the signs and symptoms of heat stress disorders and act quickly.

**Use Your Head** - Do not ignore possible symptoms of heat stress disorders. If you feel very hot, dizzy, nauseous or if your muscles cramp, stop and cool off!

**Heat Stress Disorders are serious.** Workers who have ignored the symptoms have lost their lives. Our "natural" air conditioner can fail, and often does if we overexert in extreme heat.



# 2016-2017 Scholarship Recipients



**Maggie Arvesen**, daughter of Mike and Sue Arvesen. Maggie is attending Eastern Illinois University.



**Clare Boyce**, daughter of Drew and Therese Boyce. Clare is attending Marquette University.



**Maura Boyce**, daughter of Drew and Therese Boyce. Maura is attending Marquette University.



**Morgan Giusto**, daughter of Todd and Lisa Giusto. Morgan is attending Northern Illinois University.



**Adam Hughes**, son of Jerry and Sharon Hughes. Adam is attending Indiana University.



**Jillian Martin**, daughter of Jerry and Anne Martin. Jillian is attending University of Illinois.



**Rachel Martin**, daughter of Jerry and Anne Martin. Rachel is attending Marquette University.



**Chelsie McCormick**, daughter of Jim & Rhonda McCormick. Chelsie is attending the University of St. Frances, Joliet.



**Kristina McCormick**, daughter of Chris and Tammy McCormick. Kristina is attending Illinois State University.



**Krystal McCormick**, daughter of Chris and Tammy McCormick. Krystal is attending Illinois State University.



**Ross McCormick**, son of Jim and Rhonda McCormick. Ross will be attending Lewis University.



**Jamie Scott**, daughter of Dave and Tina Scott. Jamie is attending the University of Wisconsin-Milwaukee.

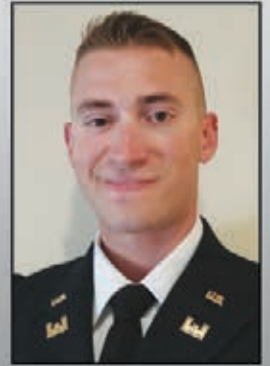


**Courtney VanDreese**, daughter of Greg and Rhonda VanDreese. Courtney is attending Northern Illinois University.

*Congratulations to our  
2016-2017 Block Electric  
Scholarship Recipients.  
We wish you the best of luck  
this year and in the future!*

## A thank you from Block Electric scholarship recipient Gary M. Jones

After the generosity and kindness that has been shown to me the last several years during my undergraduate experience,



I wanted to take the time to thank you for choosing me to be a Block Electric Scholarship recipient.

Besides graduating from Loyola University Chicago, I also received my commission into the United States Army Reserve as a 2nd Lieutenant.

While the United States Army bestowed a sizeable scholarship upon me, it did not cover everything. The Block Electric Scholarship assisted me greatly with the remainder of what I owe.

As I begin to pay my student loans, I can say with confidence that the scholarship softened the blow of debt. I am extremely grateful for the gift I received for several years.

Similar to the support my father has received from this company over his many years of employment, I have seen similar kindness from the same organization.

While every man makes his life his own, he must remember the people that helped get him there. Keeping that in mind, I thank you.

**- GARY M JONES**

**Block Electric Company**  
7107 Milwaukee Avenue  
Niles, Illinois 60714



Block Electric Company is an Equal Opportunity Employer

**CHECK OUT OUR NEW WEBSITE!**

Visit [www.blockelectric.com](http://www.blockelectric.com)  
to see our new updated website!

Please follow us on



**Niles:**  
7107 Milwaukee Avenue • Niles, IL 60714  
Phone: 847.647.4030 • Fax: 847.647.6980

**Block Electric Company**  
Service ■ Safety ■ Quality  
[www.blockelectric.com](http://www.blockelectric.com)

**Shorewood:**  
203-C Earl Road • Shorewood, IL 60404  
Phone: 815.744.2000 • Fax: 815.744.6070