



FEATURED PROJECT: Restoration Hardware



Block Electric recently completed the Restoration Hardware renovation project, located downtown in the Gold Coast's 70,000 square foot Three Arts Club at 1300 N. Dearborn Parkway.

(See story on page 3)

President's Message



The 2016 year is off to a slower start than a year ago. We have been in this position before and we will work through it as we have done so many times in the past. Many of you will recall that 2014 started slowly and finished as a very solid year. Block Electric has many great customers and a great team to take care of them. Let's propose a toast to our customers and let them know how much we appreciate their business. I challenge each of you to personally thank at least one of our customers for their business. Let them know that we stand ready to continue to show them some of our home spun "Customer Delight".

We have recently made some very integral changes to our material procurement and delivery systems. I would like to thank Brian Boyce and Scott Block for successfully creating and implementing the needed changes. I encourage anyone who has comments on additional ways to improve our systems to contact Scott Block directly. Any and all positive suggestions are very welcome.

Finally, I would like to welcome our new Warehouse Manager, Brian Clark, and our new Driver, Kyle Farmer, to Block Electric. Brian and Kyle both bring a high degree of enthusiasm and energy to their jobs. I am sure you will all join me in extending a very warm welcome and best wishes to them for long and successful careers as members of our team.



— JACK BLOCK

Spotlight On: Jason Carline

GENERAL FOREMAN



Block Electric General Foreman Jason Carline, pictured above with wife Amy and children Anthony, 13, and Haily, 11.

When he's not busy working, Block Electric General Foreman Jason Carline spends most of his time with his wife Amy and their children Anthony, 13 and Haily, 11. The family resides in Montgomery, Illinois.

"Currently we are anxiously awaiting the warmer weather. We love to be in the outdoors," Jason said. "From bike riding to hiking, we enjoy spending time at different forest preserves and state parks. Our kids enjoy everything from

hiking, fishing, and taking our canoe out for a cruise."

Before becoming an electrician, Jason juggled attending college and working different jobs. He began working with Block Electric in 1997 as a summer helper, working for Tom Sieck at Landis Plastics.

After the summer helper program ended, Jason was

Born in San Bernardino, California, Jason lived in two different parts of California and Michigan and also lived in Pennsylvania. When he was in high school, Jason was invited to participate in an exchange program and spent his senior year of high school in Maypen, Jamaica.

"As I look back, I might not have had a traditional childhood, but I certainly had a unique one," Jason said. "Living in different parts of this country (and abroad) I was exposed to different cultures, different people, and different attitudes that people may have. I hope I bring that experience to what we do now, allowing me to keep an open mind when dealing with our customers."

Jason is currently working on a project at Christ Hospital in Oak Lawn and it's proving to be a challenging experience. "In order to work here I have had to change the way we normally think. We have a task, we move forward," Jason said. "On this job we have to get every move we make approved by different groups in the hospital, from the end users to infectious control. In order to do this they need to know where and how we plan to perform our work. I had to

"Living in different parts of this country (and abroad) I was exposed to different cultures, different people, and different attitudes that people may have. I hope I bring that experience to what we do now, allowing me to keep an open mind when dealing with our customers."

—Jason Carline, General Foreman

presented with an opportunity to drive the trucks in Shorewood. "After working with the people I was teamed up with as a summer helper, it was an easy choice," Jason said. "After working in the shop for a short while Tim Boyce suggested to me that I should apply to the apprenticeship. No one in my family was in the trades, so until he suggested it, I never considered it. I took his advice, and it's been a great choice."

While Jason is a long-time Block Electric employee, he said people would be surprised to know he is not an Illinois native and that he moved around quite a bit while growing up before moving here when he was 14.

learn how to make electronic drawings with "Blue Beam" from the building footprint to show every step of our work plan. It's been quite a challenge."

Before working on the Christ Hospital job, Jason had just finished working on two different parking structures. One was a four-story garage in Palatine and the other was a seven-story garage for Christ Hospital.

"Both jobs were done with really great crews," Jason said. "In both situations we had some pretty tough weather conditions, from heavy snow to extreme heat. Everyone who worked with me did a great job."

FEATURED PROJECT:

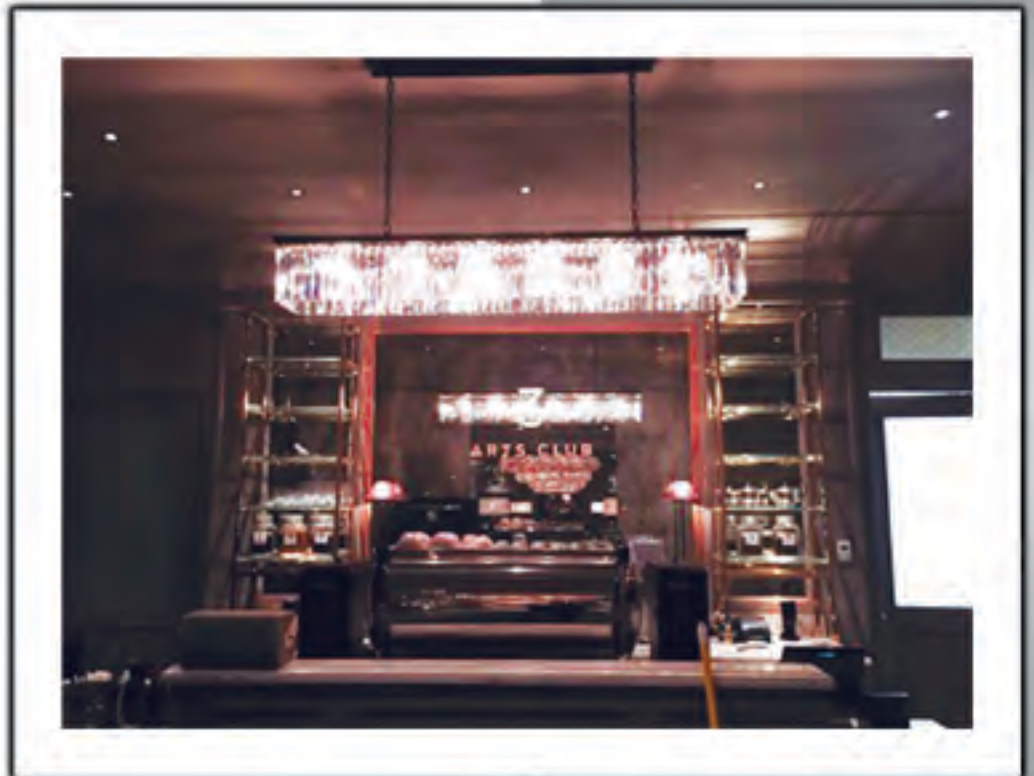
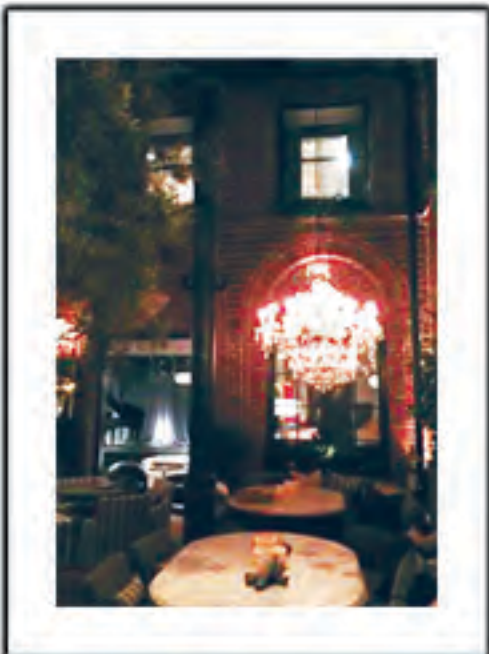
Restoration Hardware

(Continued from Page 1)

Block Electric recently completed the upscale renovation project for Restoration Hardware, located in the Gold Coast's 70,000 square foot Three Arts Club at 1300 N. Dearborn Parkway.

Restoration Hardware's renovation of the Three Arts Club as one of their flagship buildings was designed to reflect their high end marketplace and restore and reestablish the landmark's presence in the Gold Coast's residential neighborhood. The building is far more than just a furniture showroom. The six-story Gallery at the Three Arts Club is home to a café and wine tasting room, a music venue, a courtyard that is open year-round, a rooftop garden, and design floors that showcase Restoration Hardware's two newest additions- Restoration Hardware Modern and Restoration Hardware Teen. The 110 units in the building were arranged around the central courtyard.

(Continued on Page 4)





FEATURED PROJECT: Restoration Hardware P

(Continued from Page 3)

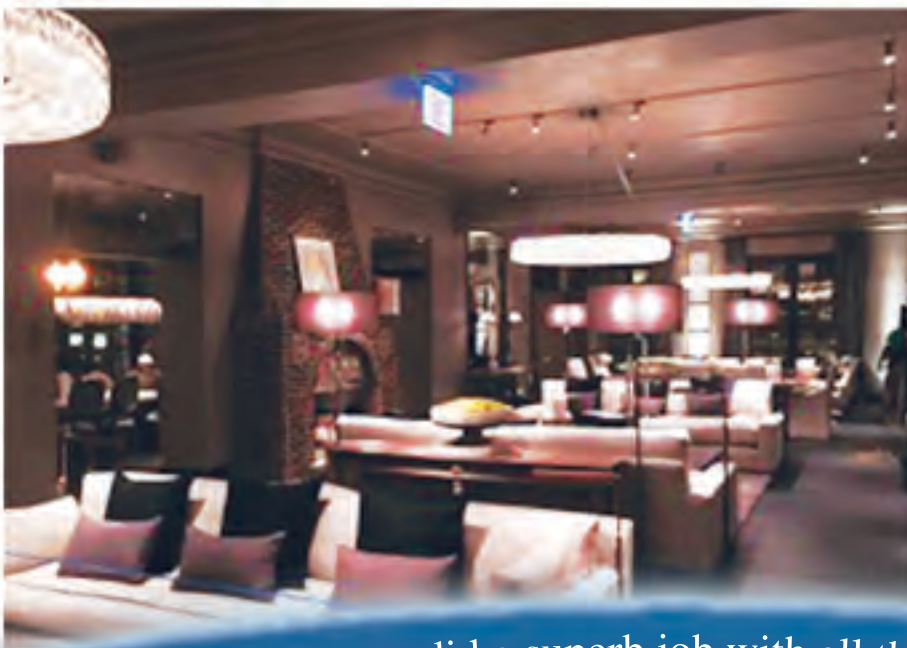
The project took approximately 9 months to complete. Block Electric electricians worked almost 20,000 man hours to complete the electrical installation, including the merchandising installation of all the lighting fixtures. The project

was supervised by Mike Benninger, Joe Roppolo and Joe Sambucaro with the help and support of many talented Block Electric electricians.

"The Block Electric crew did a superb job with all the detail required for this renovation," Block Electric Project Manager Jeff Keltz said. "It was a great use of their creativity and resourcefulness. Well done!"

Originally the Three Arts Club was built in 1914 to provide a safe, supportive and economical residence for young women studying the arts. This was part of a trend at the turn of the century to construct buildings for artists that was indicative of a growing appreciation for the arts in urban life and as a worthwhile educational pursuit.

Outside arches separated by fluted columns frame the entrance of the building. The Byzantine-style entrance contains mosaics representing the three arts of music, drama and painting. The interior barrel-vaulted ceilings have been restored and the grand staircase that had been closed for years has been reopened. The historic stage, which was once a performance venue for residents of the building, has been restored and lined with gilded antique mirrors and will be used to host acoustic performances.



"The Block Electric crew did a superb job with all the detail required for this renovation"

Project



... It was a great use of their creativity and resourcefulness.” —Project Manager Jeff Keltz

Customer Delight

A letter from Dan Romstedt, Electrical Leadman at Valley View School District 365U, to Jim McCormick and Scott Schultz

I want to take a moment to thank Block Electric for another job well done. While we are not quite 100% complete yet, I know you all have gone out of your way to get this job done right and completed on time to the best of your abilities. I especially want to recognize and praise Eric Mathieu's work and diligence. I am sure this job would not be where it is at today without his expertise and leadership. There were many obstacles on this project he had to deal with and work through to keep us on time and many others may have thrown in the towel. Once again, as with all the many projects Block Electric has done for VVSD I am extremely satisfied with the final product, completed in a timely manner. It is because of the people on your staff like Eric that makes this happen.

— Dan Romstedt,
Facility Operations—Electrical Leadman,
Valley View School District 365U

From the architect's point of view, we agree that the personal and professional attention given to this project by Scott and Eric was top notch. We enjoyed great confidence that the best interest of the project was always the pursuit. Thanks guys.

— Ed Faron, Wight & Company

I echo the sentiments noted above by both Ed and Dan. Eric is a class act, and has been professional and incredibly reliable throughout the entire project. Thanks much for Block's contribution to this successful project.
— Michael M. Lopez, Director of Operations,
Valley View School District 365U

Block Electric would like to thank Foreman Eric Mathieu and crew member Nicholas Santorinese for a job well done.

FOCUS ON SAFETY: Ladder Accident Causes

Accidents involving ladders are very common. Most of these accidents could have been avoided with proper ladder use. While a ladder is a very basic necessity and seems easy to use, it is often one of the most misused and abused pieces of equipment we see during site inspections.

An accident involving a ladder can result in a very serious injury or possibly even death. There are the 10 most common causes of ladder accidents and simple solutions to prevent such accidents from happening:

1. Failure to secure a straight ladder.

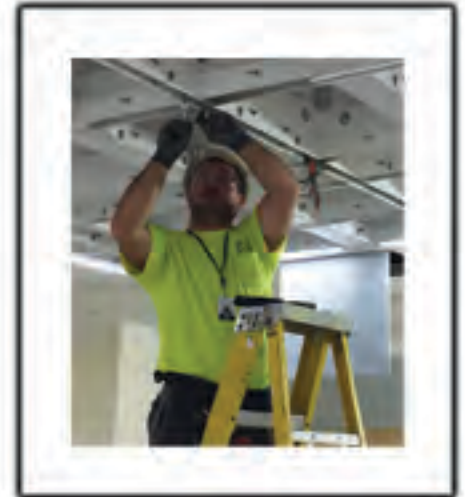
Always secure a straight ladder at the top so that it won't be able to move in ANY direction. Also ensure that the bottom of the ladder is equipped with the proper slip resistant feet.

2. Standing on the top two steps of a stepladder. If employees are standing on the top two steps of a stepladder, a taller stepladder should be used. Supply the appropriate sized ladders for the job.

3. Over-reaching while working from a ladder. Employees working from a ladder should not over reach or lean too far while working from a ladder, but rather reposition the ladder. Employees should keep their belt buckle between the side rails of the ladders. (see 1/9 regarding repositioning ladders.)

4. Carrying items up or down a ladder. Employees should always maintain three points of contact when climbing up or down ladders two hands, one foot, one hand, two feet. Using a rope to lift hoist items instead of carrying them.

5. Metal ladders coming into contact with overhead electrical lines. Metal ladders need to be kept a minimum of 10 feet from energized overhead lines that are rated 50kV or less. Add 4" for every 10kV above 50kV. Unless you're 100 percent certain of the voltage of the lines, a rule of thumb would be to maintain a minimum of 20 feet clearances.



6. Access ladders not extended to proper height. All access ladders need to be set up so that the ladder extends a minimum three feet above the landing area. This allows for a handhold getting on or off the ladder. Again, supply the appropriate sized ladder for the job.

7. Setting up a ladder at an improper pitch. Straight ladders need to be placed at a 4-1 pitch. For every 4 feet up a ladder goes, the bottom of the ladder needs to come out 1 foot from the base. So if a ladder is set up 20 feet, the bottom of the ladder should be 5 feet out from the base.

8. Using damaged or defective ladders. Any damaged or defective ladders should be tagged and removed from service immediately. If a ladder will be disposed of, be certain that it is cut up so that other employees or another trade can't use it.

9. Repositioning ladders while still on them. Employees should not "jump" a ladder to reposition it but rather climb down and reposition it.

10. Working from a closed stepladder that is leaned against a surface. Stepladders should only be used in the full open position and ensure that the spreader bars are locked into position. A leaned stepladder can slip out from under you.

Retirement News

After 17 years of outstanding service and dedication, Lillian Kirk retired at the end of 2015. Wishing her much happiness, success and good health as she begins her new adventure in life! You will truly be missed. Best Wishes and Happy Retirement from your friends at Block Electric.

Block Employee Anniversaries

Congratulations to the employees below for their years of loyalty, service and dedication to Block Electric.



Tim Boyce, who joined Block Electric on March 9, 1981, recently celebrated his 35 year anniversary.



Mike Benninger, who joined Block Electric on November 12, 1990, celebrated his 25 year anniversary.



Todd Giusto, who joined Block Electric on November 20, 1995, celebrated his 20 year anniversary.



Drew Boyce, who joined Block Electric on March 4, 1996, recently celebrated his 20 year anniversary.



Steve Van Dyke, who joined Block Electric on April 2, 1996, will celebrate his 20 year anniversary.



Joe Parthun, who joined Block Electric on May 6, 1996, will celebrate his 20 year anniversary.

REGISTER NOW! Walk & Roll Chicago

Saturday, April 23
Soldier Field, Stadium Green

There's still time to join Team Block Electric for the annual American Cancer Society Walk and Roll.

To sign up for CEI-Team Block Electric, go to: <http://main.acsevents.org/goto/blockelectric> Click on either "Join a Team" or "Donate Now".

If you have questions, please feel free to contact Crissy Bellas or Donna Dreksler.

The American Cancer Society is the largest voluntary health organization in the world. Your participation will help save lives and create more birthdays by helping people stay well, get well, by finding cures and by fighting back.

Participants can now register for their new 5K run, or continue to participate in your favorite way: Walk 5K, Skate 10K, or Bike 15K.

All those who participate in the 5K run will receive a bib number and timing device to track their run time.

On behalf of Block Electric, thank you for your support of the American Cancer Society.

Block Scholarship Application Deadline: April 30

The application deadline for the annual Block Electric Scholarship is Saturday, April 30. Application instructions are in your Team Member Handbook. Submit all applications to: Mr. Len Borhart, Borhart Spellmeyer & Co., 1752 Capital Street, Suite 400, Elgin, IL 60124. Contact Donna Dreksler (Niles Office) if you need assistance.

Block Electric Company
7107 Milwaukee Avenue
Niles, Illinois 60714



 **The Block Connection** *Customer Delight Since 1920*



Block Electric Company is an Equal Opportunity Employer

REGISTER NOW!

Walk & Roll Chicago • Saturday, April 23, 2016
Soldier Field, Stadium Green
(See Page 7 for more details)

Niles:
7107 Milwaukee Avenue • Niles, IL 60714
Phone: 847.647.4030 • Fax: 847.647.6980

Block Electric Company
Service ■ Safety ■ Quality
www.blockelectric.com

Shorewood:
203-C Earl Road • Shorewood, IL 60404
Phone: 815.744.2000 • Fax: 815.744.6070