



FEATURED PROJECT

Steppenwolf Theatre Expansion Project

The Steppenwolf Theatre Expansion Project, which began on May 20, 2019, is slated for completion on June 26 after two years of hard work and dedication by Block Electric employees.

Aside from the obvious challenge of working on this project during a worldwide pandemic, the Block Electric crew faced other obstacles as well.

"The shape and layout of this building made it very difficult for layouts and pipe installation," Project Manager Jason Carline said.

"It was also essentially two separate buildings, one inside of the other," he continued. "A separation of the two buildings, sound and

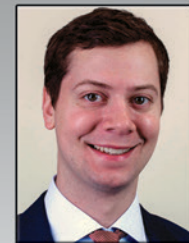
light lock, making it difficult to bring feeds and lighting control package was very detailed. There were many design challenges and changes throughout the project."

According to Carline, "The BIM process was very useful in this project trying to avoid conflicts between the trades."

Key players in this project included Jerry Martin, Kevin Gonzales and Kenny Ryan. "Jerry did an amazing job installing," Carline said.

Norcon, a relatively new contractor for Block Electric according to Carline, has been working with Steppenwolf for 10 years on budgeting and design.

Vice President's Message



Times are changing and they are moving fast. One year ago today, it felt like the world had stopped and there was no light at the end of the tunnel. Flash forward one year to today, things are starting to feel back to "normal" again. With the release of mass vaccinations and the average number of COVID cases declining on a steady pace, we are all able to get back to our normal lives again.

As the world tries to play catch up on a year that we have all felt we had lost, many supply chains have taken a beating. The supply has yet to catch up to today's demand. Much of which was caused by all the shutdowns, quarantine orders, and just overall lack of production felt all over the world. Prices of lumber, steel, copper, and plastic are now at all-time highs and are continuing to rise.

What a difference one year can make. The work outlook is off to a slow, but somewhat steady start. Our customers are starting to look into the future with some surety that they will be able to build for the future and achieve a return on their investment.

While many companies had faltered during the pandemic, there were many that had flourished. One company that I think everyone can learn something from is one I'm sure you have used, Amazon.

From day one, Amazon never lost sight of how they can service their customer better every day by creating value and how they could bring each employee, business, or consumer, a sense of customer delight.

(Continued on page 2)

Vice President's Message

(Continued from page 1)

They have nailed the customer service industry better than anyone and are having tremendous success because of it.

It's never an easy road for any company to sustain success. By consistently creating value for everyone involved in a business including suppliers, colleagues, and customers, is one of those key points to success. At Block Electric, we all have to look to new ways to create value for everyone involved in our business. This is what brings back customers for future growth and sustained success. We have been fortunate to work together on this journey and have many repeat clients as you will see below in some of the recent projects we have added over the last quarter. Many of these projects had been put on hold due to the pandemic. I hope you have a great start to your summer - it will feel a bit different than last year.

New projects:

- Chicago Police and Fire Training Facility
- Trans Union – UPS Phase #3
- Rush University Medical – Various Projects
- Stepan Chemical – Fieldbus Replacement
- New Grocery Store in Riverside
- Argonne National Labs – Various Projects
- Northwestern University – Various Projects
- Chelsea School – Service Upgrade
- Rich South School – Phase #2

— SCOTT BLOCK

Vice President, Block Electric



Spotlight On: Kevin Gonzales FOREMAN

Block Electric Foreman Kevin Gonzales began his career with Block Electric in 2009 at the age of 20.

Kevin's desire to become an electrician was inspired by his uncle. "My uncle Matt is an electrician so it always peaked my interest, then I took a class in it and loved it," he said.

In the 12 years he's been with Block Electric, Kevin said he's enjoyed experiencing Chicago in its many forms. "You get to see a lot of different parts of Chicago and experience every kind of weather," he said.

Kevin's latest project includes the Steppenwolf Theatre Expansion Project. Prior to that, Kevin was working on a building for People's Gas.

As for customer experience, Kevin said although he doesn't have much interaction with customers, "my goal is to always have a finished product that the customer is happy with."

Kevin lives in Chicago with his wife Kate and their 10 year old daughter Kyleigh. He enjoys hiking, traveling to the National Parks, seeing live music, and playing board games with his family.

A little-known but interesting fact about Kevin is that enjoys riding his bike when he can. "I rode it to work from Bridgeport to Navy Pier for over a year," he said.

Walk and Roll Celebrates 50 Years with a Drive-In Movie

Did you know that 2021 marks the 50th Anniversary of Walk & Roll?! That's right, the longest-running cancer fundraiser in Illinois is celebrating a huge milestone this year.

To commemorate half a century of saving lives, celebrating lives, and making significant progress toward our mission to eliminate cancer, we have something special up our sleeves, and you're invited!

Join us on Saturday, August 14, for a 50th Anniversary Drive-in Movie celebration! We are bringing the party to the south lot at Soldier Field, for an evening you won't want to miss - with the beautiful city of Chicago as our backdrop.

Pack up your family and friends (and your masks) in your car and join us!

You can expect:

- A socially distant, family-friendly celebration culminating with a movie screening (movie information will be released SOON)
- Survivor/patient Celebration and ceremony
- Photo opportunities
- Car Tailgating (with branded tailgating merchandise available for purchase – we can't wait to show you!)
- Raffle
- Music
- Giveaways
- Food Trucks
- Contests - best decorated car, and more

Of course, we know this wouldn't be Walk & Roll without walking, running, skating and biking around Chicagoland first! We will kick off the 50th anniversary party with a "Celebrate from Home" experience during the month of July, where you will be presented with pre-planned routes across Chicagoland that you can choose to follow or create your own! These pre-designated course maps will give you inspiration and motivation to explore the city and suburbs in a way that you haven't before.

All participants will receive a digital race packet with self-guided routes. Unable to attend the drive-in event or don't feel comfortable doing so? During the registration process, you will see there is an option to solely participate in the "Celebrate from Home" event without attending the Soldier Field Drive-in portion. You register for either option or both!

Please know that the safety of participants, volunteers, cancer survivors, and staff is always our top priority. For this event, we've hired a COVID-19 taskforce has worked closely with the city to create and enforce guidelines for safely gathering to help us plan accordingly (and will be on site).

Additionally, we regularly assess potential for in-person events and strictly adhere to all federal and local health department guidance including event size. Thank you for your partnership in this endeavor.

Stay tuned for more exciting announcements in the upcoming weeks! In the meantime, visit our FAQ page, and follow us on Facebook and Instagram to come along for the ride with our weekly updates! Be sure to read the registration instructions closely to ensure you and all of your friends/family are properly registered.

Since the beginning of the pandemic, studies have shown that 1/3 of adults failed to receive recommended cancer screenings, due to the fear, concern, and priorities surrounding the virus. The National Cancer Institute states that almost 10,000 excess deaths in the US from just breast and cervical cancer alone over the next 10 years will be because of pandemic-related delays in cancer screenings. Our mission matters more than ever and we need your help. Cancer doesn't stop and neither will we. To register or for more information visit www.walkrollchicago.org.

Anniversaries

Congratulations to the following employees who celebrated a milestone anniversary:

- Steve Vandyke, 25 years on April 2
- John Leyden, 20 years on May 30

Thank you for being part of our company's success over the years. We greatly appreciate and value your hard work and success. Happy Anniversary.

New Journeyman

Congratulations to John Maida and Joshua Max who became Journeymen on June 8.

Retirees

Congratulations to the following employees who retired from Block Electric. Thank you for all the years of dedication and hard work. You have been part of Block Electric's success and you will truly be missed. Congratulations on your new journey in life.

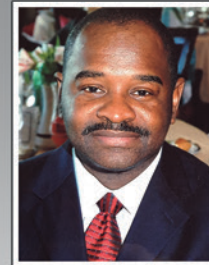


PAT PHEE
42 Years
with Block
Electric

MIKE HAINES
28 Years
with Block
Electric



LARRY PARKER
11 Years
with Block
Electric



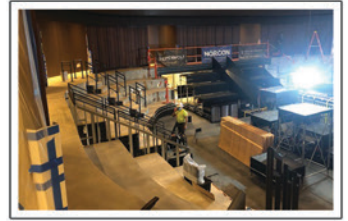
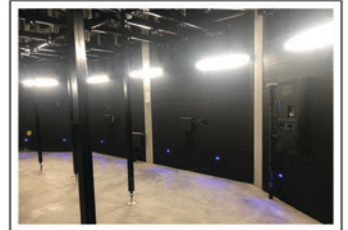
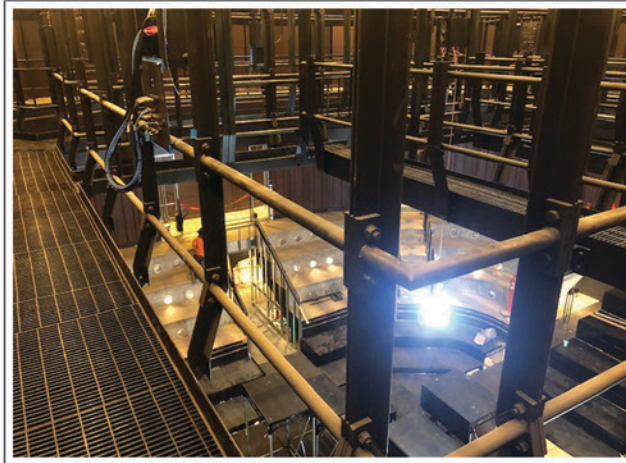
GREG MARTIN
7 Years
with Block
Electric

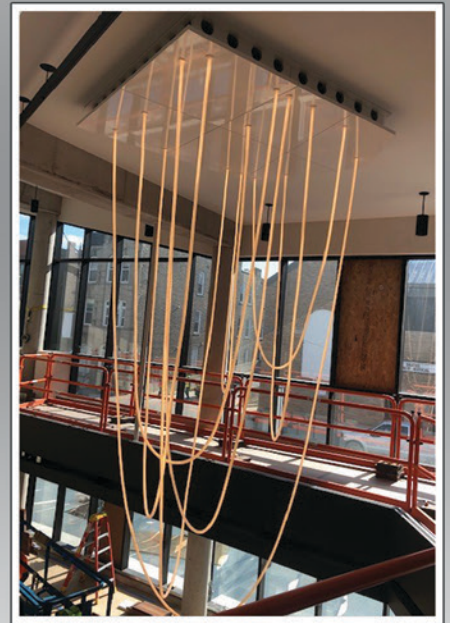
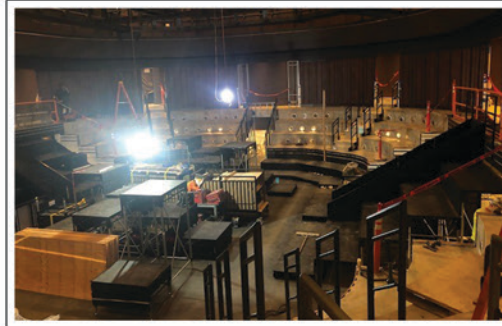
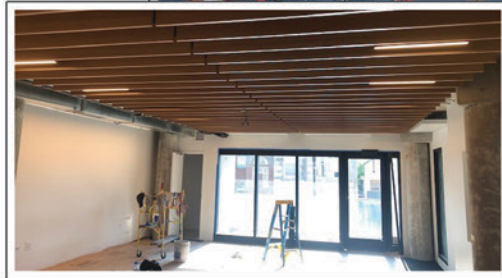
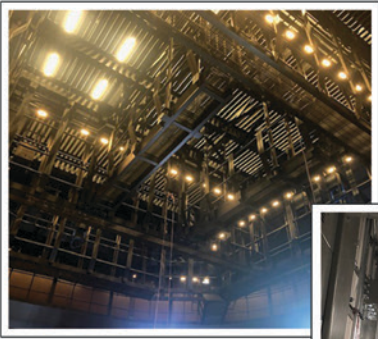


PETE CARDENAZ
5 Years
with Block
Electric

FEATURED PROJECT Steppenwolf Theatre Expansion Project

(Continued from page 1)





Block Electric's Safety Policy

It is our policy to provide all employees with a safe, healthful, and hazard-free workplace.

The intent at all times is to comply with the provisions of the Williams-Steiger Occupational Safety and Health Act of 1970 (OSHA).

Block Electric recognizes that accident prevention and efficient production are interrelated.

We further recognize our responsibility to provide adequate training, safeguards and safety equipment for each employee. In turn each employee bears the responsibility to comply with all safety regulations and the use of required safety equipment.

The safety and well being of our employees has been and will continue to be of primary importance.

Our EMR is .77 and our Contractor Score is 2429 "Excellent". Matt McShane is our safety director.



The Construction Industry Alliance for Suicide Prevention reports that many within the industry suffer in silence due to cultural expectations. Mental health issues remain stigmatized in some circles, and suicide is a taboo topic on the jobsite. Many workers feel forced to "deal with it," not seeking out the help they need, and symptoms get worse. The mental health of your workforce needs to be prioritized at the same level as wearing safety goggles and tagging out live circuits. Empowering workers to seek out resources is crucial.

FOCUS ON SAFETY Mental Health and Suicide Prevention in Construction

by Sarah Lorek

When you think about jobsite hazards, physical risks probably top the list — an unprotected fall, an unmarked restricted zone, etc. But what about the dangers you can't see?

Anxiety, depression, suicidal thoughts, and more are as dangerous to worker safety as any more tangible jobsite threat, but these can't be mitigated with caution tape.

Unfortunately, the frequency of mental health issues is increasing within the construction industry. A 2020 study found that 83% of construction workers have experienced a mental health issue. Evidence from the 2007-2009 financial crisis suggests that the COVID-19 pandemic could increase the risk of suicide in the construction industry.

This means that, of the people you work with every day, chances are good that at least one of them struggles with their mental health.

Your jobsite is not the exception. While regulations and monitoring for physical safety have increased dramatically over the years, mental healthcare lags behind. But, mental health is important and should be prioritized as highly as wearing a hard hat. The construction industry as a whole needs to work on improving mental health outreach and support, but that can only

take place one jobsite at a time. There is no better time than now to educate yourself and begin making changes.

Suicide.

According to the Centers for Disease Control, construction has the highest suicide rate of all industries, at 53.2 suicides per 100,000 workers. That's about four times greater than the national average (17.3/100,000) and five times greater than all other construction fatalities combined (10.1/100,000). In fact,

suicide could rightfully top the list of OSHA's Fatal Four Hazards.

Drug and Alcohol Abuse. A recent CDC study noted that construction workers are disproportionately prone to abuse alcohol and drugs — especially opioids, cocaine, and marijuana. The number of construction workers abusing prescription opioids is estimated at 3.2 percent versus 2 percent of the general population. Similar proportions are seen with cocaine use (1.8 percent versus 0.8 percent), and non-medical marijuana use (12.3 percent versus 7.5 percent).

Why are construction workers at risk?

There are many reasons why construction workers are so prone to facing mental health issues that can result in substance abuse and suicidal thoughts. One of the biggest factors is that 89 percent of construction workers are men. Additionally, construction workers often deal with issues that can lead to high levels of stress, anxiety, and depression. Chronic pain, pressure to perform, and sleep deprivation rank high here.

The CDC study found that the construction industry exhibits many common risk factors that are associated with feelings of helplessness and loss of control: Competitive, high-pressure work environment; High prevalence of alcohol and substance abuse; End-of-season layoffs; and Separation from family

What you can do to help.

Education. One of the most powerful tools in your toolbox to fight against mental health issues is education. Research mental health outreach programs, and make these resources readily available to workers. Something like the Suicide Prevention Hotline is a proven resource that could save a worker's life. Construction Financial Management has compiled a list of suicide prevention partners specifically designed to serve construction workers. Many have been able to take advantage of Construction Industry Alliance for Suicide Prevention's (CIASP) online training program and behavioral health screening.

Empowering workers to seek out resources is a crucial part of every manager or superintendent's job description. Here's a list to get you started.

Increase Awareness. If you're in a leadership role you can't help someone if you don't know they're suffering. Encourage workers to share mental health issues during new employee orientation. This insight can be stored and accessed through a labor management application. Foster a safe, understanding culture on and off the jobsite, so workers will be more likely to open up.

Look for the signs yourself. It's likely that mental health challenges will go unreported at times. But, that doesn't mean you won't be able to see the signs if you're looking for them. According to CIASP, the following are signs of serious anxiety, depression, and suicidal thoughts can be especially noticeable on the construction site: Decreased productivity; Increased conflict among co-workers; Near hits, incidents, and injuries; Decreased problem-solving ability; Increased tardiness and absenteeism.

2021-2022 Block Electric Scholarship Recipients

Congratulations to our 2021-2022 Block Electric Scholarship Recipients. We wish you all the best of luck this year and in the future!

WILLIAM KUTA

William is attending Iowa State University.



CONNOR LEYDEN

Connor will be attending Illinois State University in Normal, Illinois.



MAEVE MONGER

Maeve will be attending University of Illinois at Urbana-Champaign.



WESLEY NEUMANN

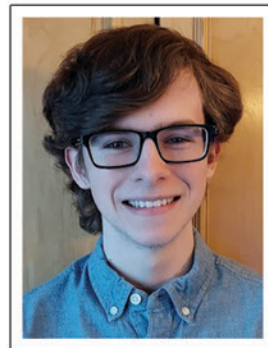
Wesley will be attending University of Illinois at Urbana-Champaign.



SAMANTHA SENKO
Amanda is attending University of Health Sciences & Pharmacy in St. Louis.



ZACKARY VAN DREESE
Zackary is attending University of Wisconsin-Madison.



LIAM WYDRA
Liam will be attending University of Illinois at Urbana-Champaign.



WIN A VISA GIFT CARD!
New Products, Tools and Prefab Assemblies

WE NEED YOUR HELP!

We are looking for fresh and innovative ideas for new products, tools and ongoing prefab assemblies to feature in future issues of the Block Electric newsletter.

In an effort to make our jobs run more efficiently and be more cost-effective, we are looking for your suggestions regarding which tools can be used in your day-to-day work to make your lives easier.

There are no right or wrong answers. We're looking for any and all products and ideas to share with the team.

WHAT'S IN IT FOR YOU?

If your idea is featured in the Block Electric newsletter, you will receive up to a \$50.00 Visa gift card.

Block Electric Company
7107 Milwaukee Avenue
Niles, Illinois 60714



Block Electric Company is an Equal Opportunity Employer

CHECK OUT OUR WEBSITE!

Visit www.blockelectric.com
to see our website!



Please follow us on



Niles:
7107 Milwaukee Avenue • Niles, IL 60714
Phone: 847.647.4030 • Fax: 847.647.6980

Block Electric Company
Service ■ Safety ■ Quality
www.blockelectric.com

Shorewood:
203-C Earl Road • Shorewood, IL 60404
Phone: 815.744.2000 • Fax: 815.744.6070