



FEATURED PROJECT

Will County Courthouse

The 369,000 square foot \$215 million Will County Courthouse project funded by the Will County government is nearing completion and slated to open this Fall in downtown Joliet. The project includes a 10 story building with the 11th floor as a penthouse for mechanical equipment, as well as a basement that has a section for inmates awaiting trial.

The new courthouse will have a total of 38 courtrooms and feature two sets of escalators between the first and third floors. The fifth floor will have a large cafeteria and dining area that may turn into a popular gathering spot for courthouse staff, lawyers and their clients. The ninth floor will initially be left empty.

The project was awarded to Block Electric in January of 2018 and was scheduled for substantial completion by September 15, 2020.

The nearly 3 year project was led by General

Foreman Chris McCormick and Foremen Travis Wills, Jeff Butts and Dave Senko. The construction manager is Gilbane, who Block has worked with on several other projects in Joliet and Will County. Wright & Company is the building's architect.

"It's going to be very, very, tech-y. I believe this will be the most technologically advanced state courthouse in the country when we open," Will County's Chief Circuit Judge Richard Schoenstedt was quoted as saying in an article in Joliet Patch. He stressed that he was only talking about state courthouses, not federal courthouses.

In the article Schoenstedt said the new Will County Courthouse is quickly becoming a source of community pride around Joliet. When the new courthouse opens, an average of 2,500 people will use it daily, "plus there's 300 to 500 employees in addition to that," the judge said in the article.

(Continued on page 3)

Vice President's Message



It has now been six months since the beginning of this pandemic and I think we can all agree on one thing — we have all adapted to change.

COVID-19 has changed the way we live and work and has created many new challenges along the way. In the very beginning of this pandemic, it seemed no one knew what the right thing to do was or how to control the spread of the virus. There was no health expert, scientist, or government official that could confidently say they knew how to resolve this.

Through all this uncertainty, one thing was certain, we never stopped. As a team, we never stopped our work, we never stopped innovating, we never stopped our quality, and we never stopped delighting our customers. These are our biggest strengths. I am so proud of all our team members and the work we have all put in through these most challenging and uncertain times. I hope we never have to face this again, but if we do I know we could face it head on with the strength we have all gained.

While this pandemic has hurt us all in the short term, we believe that our long term focus and strengths will push us forward and open up new opportunities for the future.

Like any crisis we face in our lives, I always believe that we can turn negatives into positives. We have found new ways to be safer on our job sites, including more daily mask wearing, cleaning solutions for our tools and equipment, and social distancing.

(Continued on page 2)

Vice President's Message

(Continued from page 1)

This has proven to be effective as we have had only one reported positive test result for COVID-19 to date throughout our entire company. Keeping everyone safe on our job sites is our number one priority and always will be. Our customers, suppliers, and ourselves have implemented more virtual meetings which is not only safer for health reasons, but have found to be more productive due to less travel time and more set schedules.

Our work outlook has also shifted a bit and we have opened the doors to newer opportunities with new clients. We are still learning to adapt every day and finding new ways to become more creative as times progress. We are all in this together and will rise above this new "normal". I hope you and your family continues to stay safe and strong.

Some of our newer projects include the following:

- Project C Distribution Center
- Senior Living Facility
- Studio 3
- Belden Stratford - Various Renovations
- Argonne Labs - Various Projects
- Zenith Energy
- Emerson Process Management - Controls
- Trans Union - UPS Replacement

— SCOTT BLOCK
Vice President, Block Electric



Spotlight On: Travis Wills FOREMAN

Before becoming an electrician and beginning his career at Block Electric on March 27, 2017, Foreman Travis Wills worked at Simplex where he was responsible for the testing and maintenance of fire alarm systems.

"This job is unique in the fact that I am working with many different people and personalities on a daily basis to accomplish a desired outcome," Travis said, adding that he wanted to continue a family tradition by becoming a member of IBEW LU#176. "Also the numerous different systems I encounter everyday."

Travis is currently working on the Will County Courthouse project with Chris McCormick. Other projects he has worked on included LaSalle/Peru High School with Kevin Sheridan; Costco and Zenith Energy with Dave Senko; and Reed Custer School with Chad Fowler.

"I am proud of all of my customer experiences," Travis said. "I enjoy working and

troubleshooting to ensure and promote customer delight. I like putting out quality products for customers that I can be proud of."

Travis lives in Morris, Illinois with his wife Molly and their two children — Gryphon, 10, and Drake, 7.

"Our family is currently in the process of transitioning to homeschooling and teaching our boys the importance of raising animals and growing our own food," Travis said. "We are also very active in our children's sports of soccer and basketball. We also enjoy spending time outdoors camping, hunting, fishing and hiking."

When he's not busy working, Travis enjoys spending time outdoors with his family. They enjoy hiking, fishing, shooting and camping.

Something most people don't know about Travis is that he has his Firefighter II and EMT-B licenses.

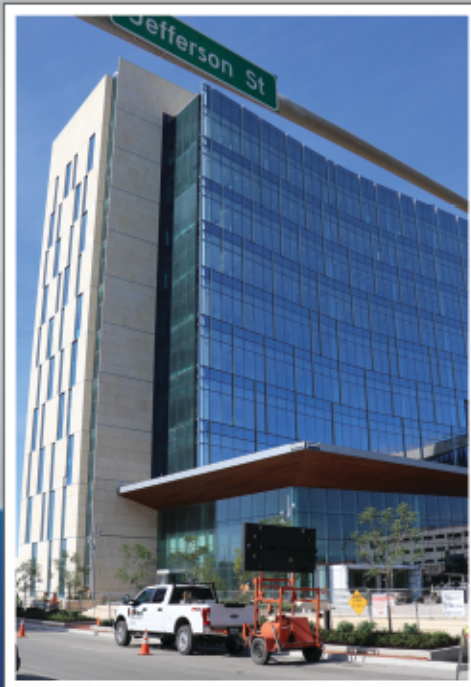
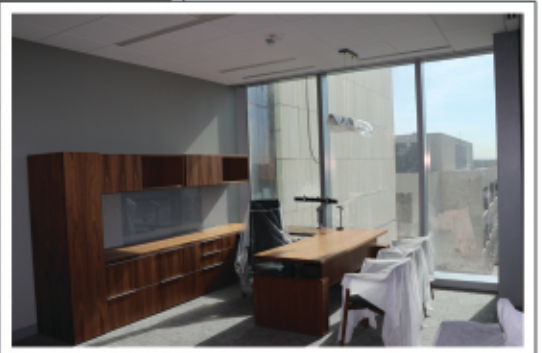
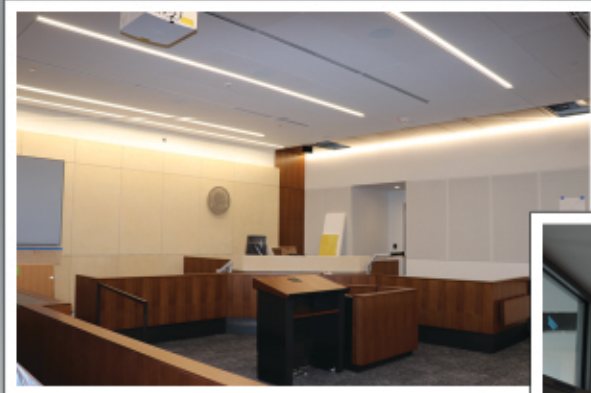
FEATURED PROJECT

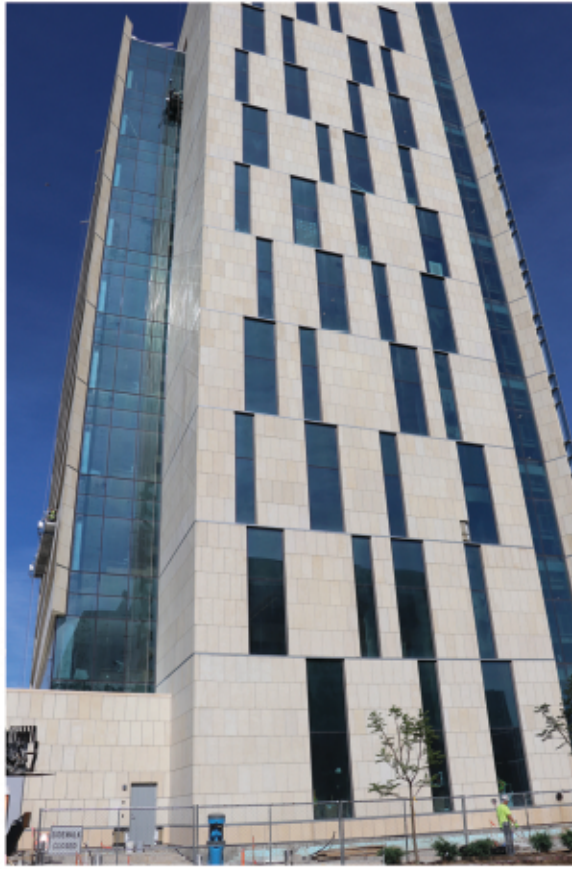
Will County Courthouse



FEATURED PROJECT

Will County Courthouse





Block Electric's Safety Policy

It is our policy to provide all employees with a safe, healthful, and hazard-free workplace.

The intent at all times is to comply with the provisions of the Williams-Steiger Occupational Safety and Health Act of 1970 (OSHA).

Block Electric recognizes that accident prevention and efficient production are interrelated.

We further recognize our responsibility to provide adequate training, safeguards and safety equipment for each employee. In turn each employee bears the responsibility to comply with all safety regulations and the use of required safety equipment.

The safety and well being of our employees has been and will continue to be of primary importance.

Our EMR is .77 and our Contractor Score is 2429 "Excellent". Matt McShane is our safety director.

Block Electric Announcements

Milestone Anniversaries

Congratulations to the following Block Electric employees who celebrated a milestone anniversary:

- Greg Vandree, who celebrated 25 years on July 20.
- Bridgette Carlyon, who celebrated 25 years on August 22.
- Crissy Sorensen, who celebrated 20 years on August 14.

Thank you for being part of our company's success over the years. We greatly appreciate and value your hard work and success. Happy Anniversary.

New Journeyman

Congratulations to Michael Nowicki, who became a Journeyman on July 27, 2020.

FOCUS ON SAFETY 25 Construction Safety Statistics and Trends for 2020

by Dustin Eusebio

The construction industry is known for being one of the most dangerous fields to work in. Out of every 5,000 private-industry worker fatalities, 20 percent are in construction. That means one out of every five worker deaths are construction-related!

Construction also results in many non-fatal injuries that cost companies millions of dollars per year. This makes safety paramount in the industry. While safety measures and precautions, like those outlined by OSHA, can be costly upfront, their ROI can be massive.

A successful construction business will maintain effective safety programs, stay updated on OSHA regulations and pay the expenses involved even when business is slow. Not only because OSHA violations can range anywhere from a warning to \$70K per incident, but because they care about their employees.

To illustrate the importance of worksite safety, we've compiled 25 construction safety statistics that cover the high number of injuries and fatalities, the cost of these accidents and the benefits of safe practices.

- One in five worker deaths annually is in construction. [OSHA]
- Workplace fatalities that were crane-related fell to their lowest level recorded in 2017 with 33 deaths. [BLS]
- Construction workers accounted for 1008 (47 percent) of all fatal work injuries in 2018. [BLS]
- The "Fatal Four" leading causes of private sector working fatalities in the construction industry are falls, being struck by an object, electrocution and being caught in something or between two objects. These accidents are responsible for 58.6 percent of construction worker deaths. [OSHA]
- Companies with 10 or fewer employees and those who are self-employed account for nearly half of all deaths on construction sites. [CDC]
- Of all industries, construction sees the most fatal falls, accounting for 51 percent of all falls in the United States. [CDC]
- During a 45-year career, there is a 1 in 200 chance that a construction worker will die from a work-related incident. [Safety & Health Magazine]

Non-Fatal Injuries in Construction

- One in every 10 construction workers are injured annually. [OSHA]
- Construction sees non-fatal injury rates that are 71% higher than any other industry. [Accident Analysis & Prevention]

■ Around half of serious workplace injuries go unreported each year. [LD&G]

■ Lifting, using a tool or machine, and carrying heavy objects are the leading causes of strain injuries in construction. [CWPR] (graphs)

■ Workers who are between the ages of 35 – 34 are the most likely to be injured while working in construction. [National Safety Council]

■ Construction worker illnesses and injuries are down from 10.9 incidents per 100 workers in 1972 to 2.8 per 100 workers in 2017. [BLS]

The Cost of Jobsite Injuries

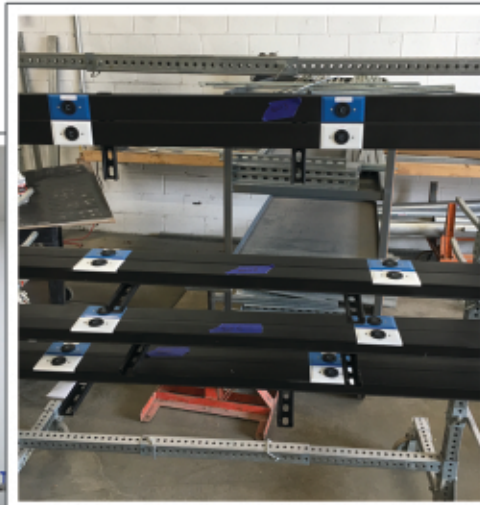
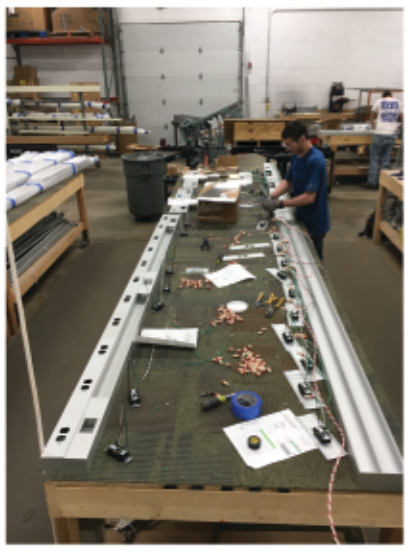
- One fatal injury costs an average of \$991,027 in hospital costs. [Converge Point]
- The construction industry sees a 71 percent higher spend on workers' compensation than all goods-producing industries combined, more than twice the mean cost for the average employer in other industries. [CPWR]
- 15 percent of overall workers' compensation costs are spent on workers who were injured at a construction site. [Workers Compensation]
- Work-related injuries have caused companies to lose 103,000,000 production days in 2018. [National Safety Council]
- Indirect costs for injuries in the construction industry can be as much as 17 times more than direct costs. [Safety & Health Magazine]
- Purvis Home Improvement Co. Inc was fined \$1.79 million for a preventable fatal fall, the highest fine of 2019. (OSHA)

It Pays to Practice Safety

- Construction companies can save an average of \$32,000 for each medically consulted injury they avoid. [National Safety Council]
- Construction companies can save \$4 – 6\$ in indirect costs for every \$1 invested in direct costs by evading an injury in the workplace. [OSHA]
- Construction site injuries account for 6–9 percent of project costs, while safety and health programs only account for 2.5 percent of project costs. [CPWR]
- A company must sell an additional \$1,667,000 in services to offset \$50,000 in losses from injuries, illness or damage and still make a 3% profit. [CPWR]
- Better and more frequent training, regular inspections and regular health and safety meetings with construction supervisors result in lower costs, fewer lost-time injuries and more profits. [CPWR]
- Getting rid of the "Fatal Four" causes of construction worker deaths would save 591 lives in the U.S. each year. [OSHA]

NEW IDEAS NEEDED...WIN A VISA GIFT CARD!

New Products, Tools and Prefab Assemblies



WE NEED YOUR HELP!

We are looking for fresh and innovative ideas for new products, tools and ongoing prefab assemblies to feature in future issues of the Block Electric newsletter.

In an effort to make our jobs run more efficiently and be more cost-effective, we are looking for your suggestions regarding which tools can be used in your day-to-day work to make your lives easier.

There are no right or wrong answers. We're looking for any and all products and ideas to share with the team.

WHAT'S IN IT FOR YOU?

If your idea is featured in the Block Electric newsletter, you will receive up to a \$50.00 Visa gift card.



Block Electric Company
7107 Milwaukee Avenue
Niles, Illinois 60714



Block Electric Company is an Equal Opportunity Employer

CHECK OUT OUR WEBSITE!

Visit www.blockelectric.com
to see our website!



Please follow us on



Niles:
7107 Milwaukee Avenue • Niles, IL 60714
Phone: 847.647.4030 • Fax: 847.647.6980

Block Electric Company
Service ■ Safety ■ Quality
www.blockelectric.com

Shorewood:
203-C Earl Road • Shorewood, IL 60404
Phone: 815.744.2000 • Fax: 815.744.6070