



FEATURED PROJECT

Reed-Custer Elementary School



The students of Reed-Custer Elementary School were recently treated to a brand new 2 story PreK-5 elementary school.

(See story on page 4)

Vice President's Message



As we head into the fall, I would like to take a look back at the many successful projects that we have completed through the year.

I would like to thank everyone for their hard work and dedication to make every one of their projects a success. Just to name a few...the Mudd Hall Library expansion, Shakespeare Theatre, Reed Custer Elementary School, Valley View School Remodel, and Lincolnwood School.

Through this time, we have reached the highest labor hours our company has seen since before the recession, in 2007. The good news is that we see no signs of slow down through the next year. Hospital work is in the early stages of picking back up as budgets begin to pass while institutional and industrial work has already begun to take on growth.

Our backlog of work is beginning to grow into the fall and winter months with the addition of institutional, industrial, and new hospital work. Please see the list below for some of our upcoming projects:

- RUMC Sim Lab
- IKEA – KNAPP conveyor project
- U of C Ophthalmology Clinic
- Silver Cross Hospital – EVS office renovations
- Costco Meat Plant – Various control work
- St. Andrew Church
- Zapata Academy Annex
- Skinner West Elementary
- Rock Sugar Southeast Kitchen
- Goodman Theatre Renovations
- Meijer's Stores – Various Locations
- McCormick Place – Metra Room Renovation

(Continued on page 2)



Vice President's Message

(Continued from page 1)

I am pleased to announce that we have added several new team members to our office staff.

Our Niles office has added a new Project Coordinator, Tony Vassallo. Tony was hired on to assist our project managers in pre-construction and throughout their projects.

Our Shorewood office has added a new Staff Accountant, Patricia Knight. Patricia was hired on to assist in accounting and clerical work.

Our warehouse has added two new truck drivers, Mitch Norman and Kevin Seeley.

Please join me in welcoming Tony, Patricia, Mitch, and Kevin in their new positions.

As growth comes and our workforce expands, it becomes easier to get distracted from our core values. It becomes a challenge to stay patient and focused on the task at hand when you are being pulled in many different directions and trying to please everyone at once.

I ask that everyone stays true to our core values and keep all our customers delighted. Our solid reputation is what's most important in this industry and it's what our customers continue to come back for.

— SCOTT BLOCK

Spotlight On: Dave Senko GENERAL FOREMAN

After graduating from high school ahead of schedule, Block Electric General Foreman Dave Senko secured a job in truck fabrication at Monroe Truck in Joliet. After deciding he wanted to work as an electrician, Dave applied to trade school in 1988 and was accepted.

"I didn't know much about this trade, but I wanted to give a skilled trade a shot," Dave said. "It seemed like being an electrician was a challenging trade."

Since joining the staff at Block Electric in 2007, Dave has worked on numerous projects for the company, including the Will County Jail addition, the IVCH-Peru Hospital addition, the PQ Corporation-Joliet job, the Argonne National Laboratories project, the Duct Bank and CHP project, the Meijer Bloomingdale remodel and the Costco project.

Of all the jobs he's worked on, Dave said one of the customer experience jobs he is most proud of is the PQ Corporation-Joliet Plant PLC

Upgrade. "We were employed by PQ Corporation for over approximately 2.5 years to help modernize their process control systems," he said. "This project was performed by interacting directly with their programmers, engineers and process staff. This was more or less a design build project."

Over the last several years Dave said he has enjoyed dealing with the PLC and Instrument side of the trade, which has provided a nice variety in his work routine.

Dave, who lives in Elwood with his wife, Sheryl, and their two daughters—Samantha, 15 and Sydney, 13—enjoys hunting and restoring antique cars in the limited spare time he has.

With their daughters attending two different schools and with each of them involved in several sports, Dave and his family keep very busy attending volleyball games, basketball games, softball games and track meets. His daughter Samantha was chosen to attend the Illinois Math and Science Academy in Aurora.

Here's a little known fact about Dave and his family: each of his daughters enjoys drag racing. "When each of my daughters turned 8 years old, they decided they wanted to drag race junior dragsters and we try to attend 20 to 25 races a year around the country," he said.



SEND US YOUR IDEAS AND WIN A VISA GIFT CARD!

New Products, Tools and Prefab Assemblies

WE NEED YOUR HELP!

We are looking for fresh and innovative ideas for new products, tools and ongoing prefab assemblies to feature in future issues of the Block Electric newsletter.

In an effort to make our jobs run more efficiently and be more cost-effective, we are looking for your suggestions regarding which tools can be used in your day-to-day work to make your lives easier. There are no right or wrong answers. We're looking for any and all products and ideas to share with the team.

WHAT'S IN IT FOR YOU?

If your idea is featured in the Block Electric newsletter, you will receive up to a \$50.00 Visa gift card.

Here are just a few of the many innovative assemblies we have been building in the prefab shop.



American Airlines GEM building from the Shop.



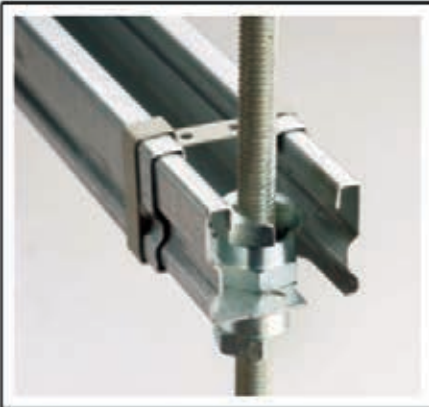
American Airlines GEM building to the Field.



Reed Custer Elementary School Prefab Pole Lights.



Rock Sugar SE Asian Kitchen 3 -1/2 Inch Prefab Rigid Nipples.



2017 PRODUCT OF THE YEAR EC&M Platinum Award Winner

The CADDY Retrofit Telescoping Strut Replacement has been named the EC&M Product of the Year! This innovative product allows contractors to install strut trapeze above an existing trapeze without disrupting services. Additionally, the channel telescopes to the needed length (between 12.5 and 20 inches) and locks into place without the use of tools.

“We are thrilled with Block Electric’s work on our new elementary school. Scott Schultz, Project Manager, Chad Fowler, Foreman, and all on-site Block electricians did an outstanding job. Scott and Chad always answered questions in a timely manner, and they did a great job of maintaining coordination with sub-contractors and all other trades. It was immediately noticed that Block takes pride in their work and that all Block employees treat the project as though it was one of their own. Many on-site problems were avoided because Chad took the time to thoroughly review plans and raise questions as needed. I am extremely appreciative of this added system of checks and balances. I would not hesitate to have Block do additional work for the Reed-Custer School District.”

—MARK MITCHELL
Reed-Custer Superintendent



FEATURED PROJECT

Reed-Custer Elementary School

(Continued from page 1)

The students of Reed-Custer Elementary School were recently treated to a brand new 105,000 square foot two-story PreK-5 elementary school. As classes resumed on August 16 for the school district, it was a sprint to the finish line for all the trades.

“I would like to thank all the team members that were on the project in July and August as they sacrificed their family time as we were working 6 days a week and 10 hour days the last few weeks up until school started,” said Project Manager Scott Schultz.

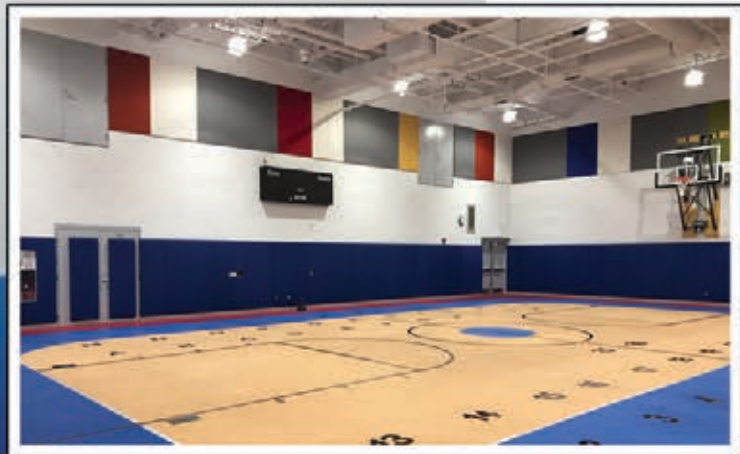
Work on the school began in March of 2016 and is being completed this September.

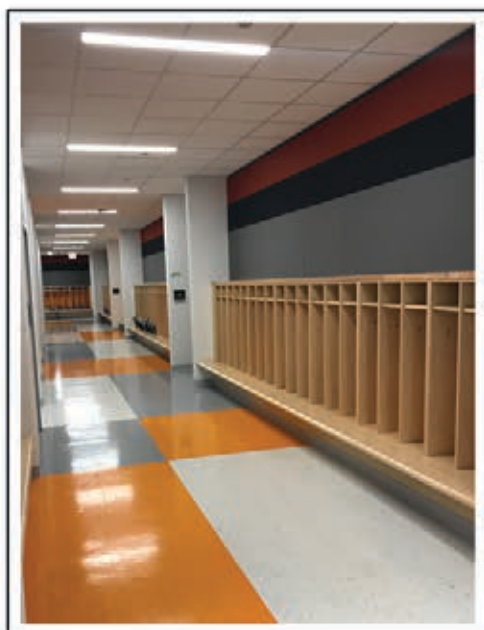
Block Team members who were part of

the project included:
Chad Fowler (General Foreman), Kevin Sheridan, Adam

Mellen, John Thatcher, Bill Wills, Phil Chaney, Josh Hume, Pat Dearing, Matt Nilles, Tim Matile, Jeff Holmes, John Lattz, Alex Giese, Eric Mathieu, Matt Connor, Ryan Allen, Travis Wills, Larry McCormick, Chris Ondreja, Alec Wills, Ed Ormsby Jr., Susan Solon, Jodi Loferski, Brian Cronin, George Blair, Tim Irvine, Charles Lysek, and Jarrett Wood. Construction Managers were David Norris, Carrie DelRose, Bob Moore and Brian Burke of Gilbane Building Co.

“Like any project this one had it's fair share of road bumps and delays but with the leadership from Chad, we were able to finish the project on schedule. We are still on site as this letter is being typed and finishing the last of the site lighting, field building and miscellaneous owner change orders. It has been a pleasure working with Gilbane, and the school district's Superintendent, Mark Mitchell. Thank you all for making this project a success!”





New Hires

Block Electric would like to welcome the following new team members:

TONY VASSALLO

*Project Coordinator,
Niles Office*

Prior to joining Block Electric Tony spent a few years working for a small general contractor in the West Loop where he started out working on both the accounting and construction sides of the business and ended up managing his own projects in the field. Tony's degree is in Architecture and that is what he spent the first part of his career doing. In between his stints in architecture and construction, Tony and his wife started a graphic design business. Eventually, he decided to come back to an industry that more closely related to his education.



PATRICIA KNIGHT

*Accounting,
Shorewood Office*

Patricia has been working in the accounting field for over 30 years. She has worked most of her career in the Construction Industry. She was also a marketing liaison for government and other target markets which included the Department of Defense (Navy and Army Corp of Engineers), City of Chicago (Department of Purchasing), Department of Veterans Affairs and Illinois Department of Transportation.



MITCHELL NORMAN

*Delivery Driver,
Shorewood/Niles Office*



KEVIN SEELEY

*Delivery Driver,
Shorewood/Niles Office*



FOCUS ON SAFETY:

As a Safety Professional Do You Ignore a Near Miss?

by Ron Parker, STS, CHST

A near miss is described as an unplanned event that did not result in injury, illness or damage, but had the potential to do so.

Have you ever ignored a near miss? Do you breathe a sigh of relief and mumble under your breath "good luck"?

Remember the difference between a near miss and an accident could be a second or an inch. A near miss should be a warning to you and should not be ignored. A thorough investigation should be done to determine the cause. It could prevent an accident where equipment could be damaged, someone could be injured or someone could be killed. Have you ever heard the assumption, first aid, first aid, near miss and then accident? This is not a proven fact but could be a thought process for you to follow.

Near misses are very serious incidents and cannot be discounted. A recent study shows that for every 330 incidents, 300 produce no injuries, 29 produce minor injuries and one produces

major injuries or even death. Of course, these statistics vary with the tasks being performed.

Unsafe working conditions, unsafe employee work habits, improper use of equipment or use of malfunctioning equipment have the potential to cause work related injuries. All of these can be put in the category of a near miss and should be corrected immediately. Even though there is an emphasis put on a Safety Professional in the title of this article, it is everyone's responsibility to report and/or correct these situations.

An example of a near miss: Suppose you are walking close to a scaffold where brick masons are laying brick. You see a brick fall, and hear no warning shout. You or someone else could have been hit by the brick.

An investigation should reveal why the brick fell. Was it mishandled? Was it kicked loose? Was a toe board missing? After determining the reason, a solution should be recommended to the group of brick masons.

Block Electric's Safety Policy...It is our policy to provide all employees with a safe, healthful, and hazard-free work place. The intent at all times is to comply with the provisions of the Williams-Steiger Occupational Safety and Health Act of 1970 (OSHA). Block Electric recognizes that accident prevention and efficient production are interrelated. We further recognize our responsibility to provide adequate training, safeguards and safety equipment for each employee. In turn each employee bears the responsibility to comply with all safety regulations and the use of required safety equipment. The safety and well being of our employees has been and will continue to be of primary importance. Our EMR is .78 and our Contractor Score is 2390. Phil Casto is our safety director.

New Journeyman

Let us all congratulate Michael Mautino who became a Journeyman on September 06, 2017.

Bill Kuta Promotion

As of today, Bill Kuta has started as a Project Manager in training in our Shorewood office. Please join me in welcoming Bill in his new position.

Welcome Baby!

Congratulations to Dustin and Liz Ritter on their new addition. Brooklyn Leigh Ritter was born on August 25, 2017 and weighed 7 lbs., 1 oz. She was 21" long.

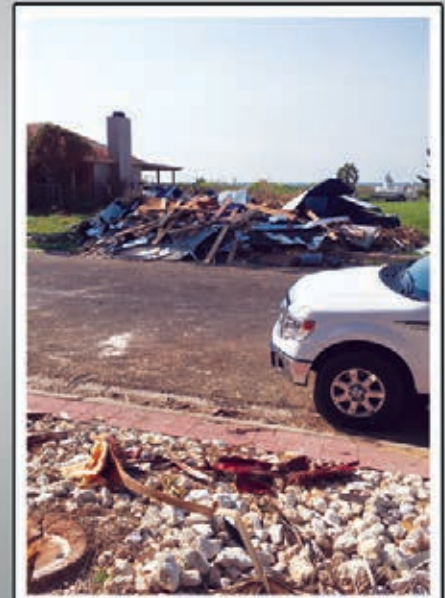


Texas First Response Crew



The 176-member Texas first response crew, led by Block Electric's Randy Miller (third from the right), recently helped with hurricane relief efforts in Texas. The group was part of the First Methodist Church group from Morris Illinois.

A big thank you goes out to Randy and his crew for all their help during these tough times.



Block Electric Company
7107 Milwaukee Avenue
Niles, Illinois 60714



Block Electric Company is an Equal Opportunity Employer

CHECK OUT OUR WEBSITE!

Visit www.blockelectric.com
to see our website!

Please follow us on



Niles:
7107 Milwaukee Avenue • Niles, IL 60714
Phone: 847.647.4030 • Fax: 847.647.6980

Block Electric Company
Service ■ Safety ■ Quality
www.blockelectric.com

Shorewood:
203-C Earl Road • Shorewood, IL 60404
Phone: 815.744.2000 • Fax: 815.744.6070