



## FEATURED PROJECT: La Rabida Outpatient Center—Chicago

The recent completion of a 13,000 square foot Outpatient Center featuring 18 new exam rooms designed especially for children with special healthcare needs at La Rabida Children's Hospital in Chicago is yet another example of how Customer Delight and having a good, long-standing relationship with customers is crucial to securing future projects.

Under the supervision of Block Electric Project Manager Jerry Hughes and General Foreman Mike Benninger, the La Rabida Ambulatory Care

Addition was completed in four phases to prevent the disruption of existing hospital services. The Outpatient Center will help reduce health care costs by decreasing the number of readmissions and keeping patients out of the hospital by providing top-quality care in an outpatient setting.

Block Electric's relationship with La Rabida dates back to 1999 when Phil Casto completed the renovation of the second floor North wing patient rooms.

*(Continued on Page 2)*

## President's Message



I think an often overlooked topic that we all face on a day-to-day basis is achieving a balance between work and life. We all work to make sure our families have the life that we wish for them. Whether you are in a one wage earning family or both you and your significant other work, it is to meet your common goals! But with this brings specific situations that require more patience, understanding and tolerance in our family lives. Now I don't pretend to be an expert in this field; however, some things have become readily apparent to me over the years. First, your job is extremely important to you and your family. Second, you are making a significant contribution to the family culture by establishing your work ethics in the job market. Third, it is a constant juggling act to balance work and life together. If you think about it, we probably spend more time either thinking about or being at work than we spend with our families. This easily kicks the balance out of harmony. The most important thing is to always recognize that both work and family are equally significant and that without love and support from our families we can't function as well at work. Stress levels rise and we become ineffective in both our personal lives and our work lives.

With these thoughts, there really is only one answer. We have to respect each other for what everyone accomplishes on a daily basis! We have to show tolerance for good days and bad days. And we have to support each other so that the balance stays in our lives. I realize not all of us are married or have significant others, but our families mean everything to us. It is how we interact with our families and our work lives that make all the difference between being successful or not. Your success as an individual contributes to your successes as a team member. It's very important for our company managers to recognize that we all have personal lives and sometimes they are not in harmony with our work lives. A little tolerance can go a long way.

As I have said so many times in the past, "Thank You" to all our spouses, families, and significant others for the support you give to the people who directly get a paycheck from Block Electric. Without you we would never succeed or accomplish what we have been able to do over the years.

Everyone is a valuable member of THIS Team. So "Thank You" all!

—JACK BLOCK



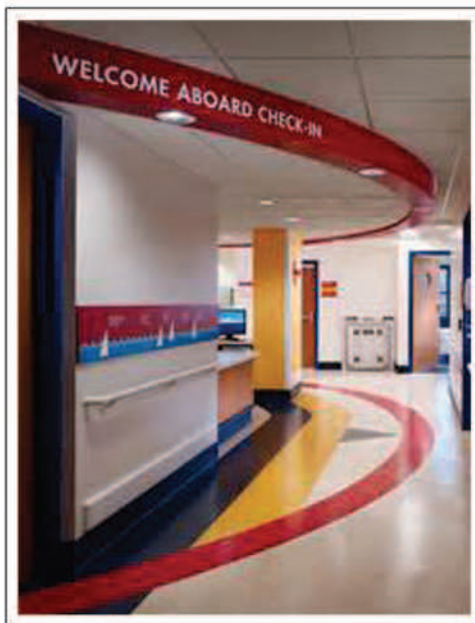
## New projects

Our backlog of work has improved over where it was one year ago. Things started to pick up around June 1 of 2013 and this upward trend has continued into 2014.

New projects we are currently working on or will be beginning soon include:

- Argonne National Laboratories – Substation work
- Chicago Athletic Club – Remodel/Conversion to Hotel
- Episcopal Diocese of Chicago – Remodel of 4th and 5th Floors
- Adventist Glen Oaks Hospital – Chiller Replacement
- Harper College – Building H Renovation
- Harper College – Parking Garage
- Macy's State Street Store – Fire Alarm Replacement
- Meier Stores – New supermarkets in Homer Glen and Mokena
- Morris Hospital – Yorkville Immediate Care Clinic
- Patriot Park Evanston – Renovation of Facility
- Rush University Medical Center – Simulation Lab Renovation
- Rush University Medical Center – Urology Offices Remodel
- Rush University Medical Center – Atrium Building UPS
- Trans Union – 9th Floor Remodel
- University of Chicago – Lab School Expansion and Remodel

## FEATURED PROJECT: La Rabida Outpatient Center—Chicago



*(Continued from Page 1)*

"We should all be proud of our mission statement and remember that every job we work on should never be our last job, but the start of a long relationship with a valuable customer," Hughes said.

In 2004 Todd Giusto renovated the La Rabida Lobby and Emergency Room. Benninger completed the renovation of the second floor South wing patient rooms in 2009, followed by a renovation of the stair towers in 2010.

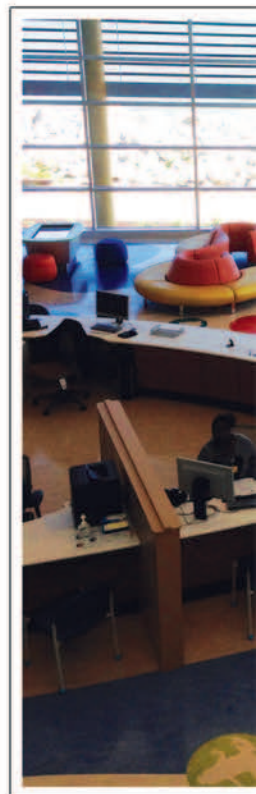
"The successful completion of these projects

led to us getting the Ambulatory Care Building that Mike Benninger just finished," Hughes said. "Ron Smith is the director of construction at the hospital and our relationship with him and our consistent quality of work has kept us in good standing with him for the past 17 years."

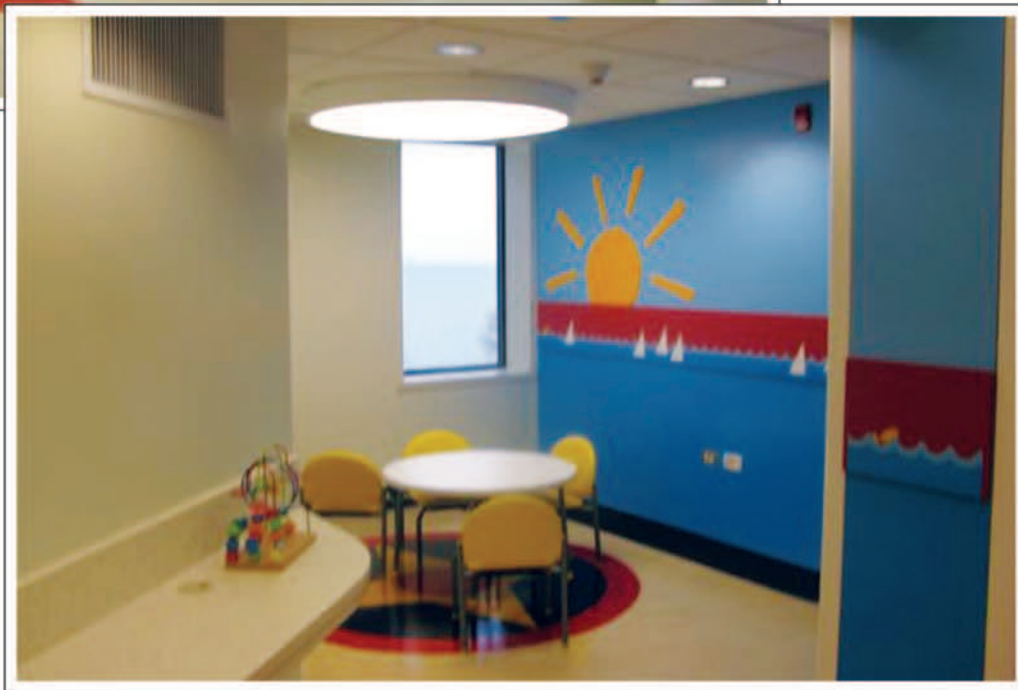
La Rabida Children's Hospital is a one-of-a-kind Chicago area children's hospital specializing in the treatment of chronic illnesses, developmental disabilities, abuse and trauma. In addition to the new exam rooms, which feature larger rooms, wider entrances and more specialty areas such as a procedure room and a nutrition area, Block Electric was responsible for adding new 1200 amp service, extending the existing fire alarm system, new lighting and distribution systems, a new pharmacy and new labs.

La Rabida Children's Hospital was born in 1896 out of the generosity of the government of Spain and a group of dedicated volunteers whose mission of providing care to children with lifelong medical conditions regardless of their family's ability to pay has been unwavering throughout the years. La Rabida annually serves approximately 9,000 children who require primary and specialty care to address complex and challenging medical conditions.

"We should all be proud of our mission statement and remember that every



The La Rabida project is yet another reflection of Block Electric's commitment to the environment. Designers have applied for Leadership in Energy and Environmental Design (LEED) recognition. Highlights from the LEED design include an overall 18 percent reduction in energy use, a 40 percent reduction in HVAC fan power and a 57 percent reduction in space cooling energy consumption. Additionally, over 75 percent of the construction waste is being recycled and landscaping does not require irrigation.



job we work on should never be our last job, but the start of a long relationship v



## Spotlight On: John Leyden

### PROJECT MANAGER

His recent promotion from General Foreman has been a physical and mental transition for John Leyden, who has been working as a Project Manager out of the Niles office since last October.

“Every day is a new experience and a bit humbling at times to realize how little you know and how much there is to learn,” said John, who has been working at Block Electric since January of 1995. “It’s allowed me to view the industry from another perspective and be involved in the whole process. I am able to see all the factors that go into completing a job; receiving the original design drawings, performing takeoffs, collecting vendor prices, submitting a proposal, being awarded a job, the entire construction process and finally the finished product.”

John, who grew up in the Rogers Park neighborhood of Chicago and graduated from the University of Illinois at Champaign, comes from a family of electricians including his father, brother and cousins. “Growing up my brother and I were exposed to construction as a whole and in particular the electrical field by my father who owned property and consistently brought us along to assist,” he said.

After being involved in all aspects of construction at one point or another, John said that one unique aspect of his job is seeing the entire construction process from start to finish.



When he’s not busy overseeing projects at Block, John’s managerial skills carry over into his personal life as he transitions to his role as a father with four active children who are all heavily involved in multiple sports, including basketball, baseball, football, volleyball and soccer.

John lives in Park ridge with his wife Jennifer and their four children—Jack, 12; Connor, 11; Ryan, 9; and Caitlin, 7.

“Lacking time for any personal adventures, I guess my biggest hobby is coaching,” John said. “I am currently coaching basketball and shortly will move into baseball season followed by football.”

As for his professional accomplishments, John has several customer experiences he is proud of.

“Some of the customer experiences that I am most proud of would be the Evanston Senior Center, which received the 2003 Interior Architectural Award; the Niles Police Station, which was used in multiple episodes of the show *Take the Money and Run*; and BMO Harris Bank in Naperville, which was our first heavy prefabrication job.”



with a valuable customer.”

## Coaching employees to develop safe work habits

Often when supervisors conduct safety inspections, they tend to concentrate on conditions or “things” that may lead to accidents. While it is very important to frequently identify unsafe conditions and correct those situations, it is even more critical to conduct personal safety evaluations specific to each employee’s individual work practices.

**Safety professionals have determined that over 90 percent of all injuries are caused by unsafe acts and poor work practices.** This means that individual decisions people make are most often responsible for causing injuries and accidents. Regular personal safety contacts by supervisors can identify unsafe behaviors before an injury takes place.

**An important goal of safety inspections and coaching employees in safe work practices is identifying and eliminating hazards and/or behaviors that may lead to an accident.** Laws of probability are associated with accidents and injuries. For every serious disabling accident, several occur which only result in minor medical treatment. For each of these, many smaller accidents or near misses take place. Many serious accidents are due to either an accident that starts out small and then worsens unexpectedly, or because of something that on most days would be a near miss. By reducing minor accidents and near misses, the potential for serious injury is also lowered.

**The ability to communicate effectively with others and understand what motivates people is critical for coaching employees.** What must we know in order to influence the behavior of others? Employees need credit for their work and ideas. Maintain others’ self-esteem and positive attitudes is a critical step in effective communication and influencing behavior. **Dialogue with workers should reinforce safe work habits in addition to identifying unsafe ones.** Your goal? **Catch people doing things right!** This encourages them to continue the same correct behavior.

## Employees celebrate anniversaries

Congratulations to the employees below for their years of loyalty, service and dedication to Block Electric.



**Leo Keigher**, who joined Block on Jan. 1, 1974, recently celebrated his 40 year anniversary.



**Jim McCormick**, who joined Block on Jan. 25, 1994, recently celebrated his 20 year anniversary.



**Jeff Keltz**, who joined Block on Feb. 1, 1984, recently celebrated his 30 year anniversary.



**Jerry Martin**, who joined Block on April 28, 1994, will celebrate his 20 year anniversary in April.

## IBEW Trainee Program registration begins April 12

IBEW Local 134 and the Electrical Contractors’ Association have agreed to renew the Trainee Program for 2014 due to its success over the last year.

IBEW Local 134 and the Electrical Contractors’ Association of the City of Chicago will provide trainee opportunities to those who may be interested in apprenticeship in the unionized electrical construction industry. The Trainee Program begins with a non-paid one week electrical construction industry orientation. Upon completion of the orientation program, trainees will be assigned to a signatory contractor and begin working on a jobsite.

In addition to the Trainee Program, EJATT will offer the optional 134 Jump Start Program, which is a 24-hour intensive classroom instruction

program that provides an introduction to the electrical construction industry that complements the Trainee Program.

To participate in the Trainee Program, you must obtain a letter of recommendation from one of the signatory contractors or from the Local 134 Business Manager. Any applicant from a signatory contractor will be referred to that contractor upon successful completion of all prerequisites.

All Trainee Program applicants must report in person to the IBEW-NECA Technical Institute at 6201 W. 115th Street in Alsip from 9 am to noon on April 12, April 19, April 26 and May 3. For more information, call (708) 389-1340.



### New Journeyman

Congratulations to Matt Crutchfield, who became a journeyman on December 2, 2013.

## Block Scholarship Application Deadline is April 30

The deadline for scholarship applications is April 30. Application instructions are in your Team Member Handbook. Submit all applications to: Mr. Len Borhart, Borhart Spellmeyer & Co., 1752 Capital Street, Suite 400, Elgin, IL 60124.

**Block Electric Company**  
7107 Milwaukee Avenue  
Niles, Illinois 60714



*Customer Delight  
Since 1920*

**The Block Connection**

Block Electric Company is an Equal Opportunity Employer

## 4th Annual American Cancer Society Walk and Roll

There's still time to join Team Block Electric for the 4th Annual American Cancer Society Walk and Roll, which is scheduled for Saturday, April 26, 2014 at Soldier Field.

To sign up for CEI-Team Block Electric, go to [www.walkrollchicago.org](http://www.walkrollchicago.org), click on Sign Up,

then click "Join a Team" and search for CEI-Team Block Electric. The registration fee is \$15 for participants 18 years and older. Kids register for free if they attend with the family.

The American Cancer Society helps people stay well and get well, finds cures, and fights

back against cancer, helping cancer survivors to celebrate another birthday this year!

Together we truly are saving lives and creating a world with less cancer and more birthdays.

**Thanks again for your support for this great cause!**

**Niles**  
7107 Milwaukee Avenue • Niles, IL 60714  
Phone: 847.647.4030 • Fax: 847.647.6980

**Block Electric Company**  
*Service ■ Safety ■ Quality*  
[www.blockelectric.com](http://www.blockelectric.com)

**Shorewood**  
203-C Earl Road • Shorewood, IL 60404  
Phone: 815.744.2000 • Fax: 815.744.6070